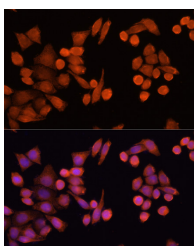


PLA2G4D Polyclonal Antibody

Catalog No.	E-AB-66466	Reactivity	H
Storage	Store at -20°C. Avoid freeze / thaw cycles.	Host	Rabbit
Applications	IF	Isotype	IgG

Note: Centrifuge before opening to ensure complete recovery of vial contents.

Images



Immunofluorescence analysis of HeLa cells using PLA2G4D Polyclonal Antibody at dilution of 1:100 (40x lens). Blue: DAPI for nuclear staining.

Immunogen Information

Immunogen	Recombinant fusion protein of human PLA2G4D (NP_828848.3).
GeneID	283748
Swissprot	Q86XP0
Synonyms	PLA2G4D,cPLA2delta

Product Information

Buffer	PBS with 0.02% sodium azide, 50% glycerol, pH7.3.
Purify	Affinity purification
Dilution	IF 1:50-1:200

Background

PLA2G4D (Phospholipase A2 Group IVD) is a Protein Coding gene. Among its related pathways are Sweet Taste Signaling and Acyl chain remodelling of PE. Gene Ontology (GO) annotations related to this gene include phospholipase A2 activity and phospholipase activity. An important paralog of this gene is JMJD7-PLA2G4B.

For Research Use Only

Thank you for your recent purchase.

If you would like to learn more about antibodies, please visit www.elabscience.com.

**Focus on your research
 Service for life science**

Applications: WB-Western Blot IHC-Immunohistochemistry IF-Immunofluorescence IP-Immunoprecipitation FC-Flow cytometry ChIP-Chromatin Immunoprecipitation Reactivity: H-Human R-Rat M-Mouse Mk-Monkey Dg-Dog Ch-Chicken Hm-Hamster Rb-Rabbit Sh-Sheep Pg-Pig Z-Zebrafish X-Xenopus C-Cow.