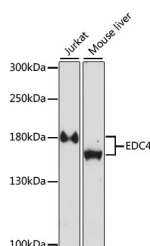


## EDC4 Polyclonal Antibody

<b>Catalog No.</b>	E-AB-66481	<b>Reactivity</b>	H,M
<b>Storage</b>	Store at -20°C. Avoid freeze / thaw cycles.	<b>Host</b>	Rabbit
<b>Applications</b>	WB	<b>Isotype</b>	IgG

**Note:** Centrifuge before opening to ensure complete recovery of vial contents.

### Images



Western blot analysis of extracts of various cell lines using EDC4 Polyclonal Antibody at dilution of 1:1000.

### Immunogen Information

<b>Immunogen</b>	Recombinant fusion protein of human EDC4 (NP_055144.3).
<b>GeneID</b>	23644
<b>Swissprot</b>	Q6P2E9
<b>Synonyms</b>	EDC4,GE1,Ge-1,HEDL5,HEDLS,RCD-8,RCD8

### Product Information

<b>Calculated MW</b>	109kDa/151kDa
<b>Observed MW</b>	160-180kDa
<b>Buffer</b>	PBS with 0.02% sodium azide, 50% glycerol, pH7.3.
<b>Purify</b>	Affinity purification
<b>Dilution</b>	WB 1:200-1:2000

### Background

EDC4 (Enhancer Of mRNA Decapping 4) is a Protein Coding gene. Diseases associated with EDC4 include Human Granulocytic Anaplasmosis and Anteroseptal Myocardial Infarction. Among its related pathways are Gene Expression and Deadenylation-dependent mRNA decay.

#### For Research Use Only

Thank you for your recent purchase.  
 If you would like to learn more about antibodies, please visit [www.elabscience.com](http://www.elabscience.com).

**Focus on your research  
 Service for life science**

Applications:WB-Western Blot IHC-Immunohistochemistry IF-Immunofluorescence IP-Immunoprecipitation FC-Flow cytometry ChIP-Chromatin Immunoprecipitation Reactivity: H-Human R-Rat M-Mouse Mk-Monkey Dg-Dog Ch-Chicken Hm-Hamster Rb-Rabbit Sh-Sheep Pg-Pig Z-Zebrafish X-Xenopus C-Cow.