

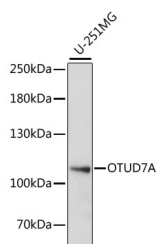
## OTUD7A Polyclonal Antibody

**Catalog No.** E-AB-66491  
**Storage** Store at -20°C. Avoid freeze / thaw cycles.  
**Applications** WB

**Reactivity** H  
**Host** Rabbit  
**Isotype** IgG

**Note:** Centrifuge before opening to ensure complete recovery of vial contents.

### Images



Western blot analysis of extracts of U-251MG cells using OTUD7A Polyclonal Antibody at dilution of 1:1000.

### Immunogen Information

**Immunogen** A synthetic peptide of mouse OTUD7A (NP\_570950.1).  
**GeneID** 170711  
**Swissprot** Q8R554  
**Synonyms** OTUD7A,C15orf16,C16ORF15,CEZANNE2,OTUD 7

### Product Information

**Calculated MW** 100kDa  
**Observed MW** 105kDa  
**Buffer** PBS with 0.02% sodium azide, 50% glycerol, pH7.3.  
**Purify** Affinity purification  
**Dilution** WB 1:200-1:2000

### Background

This gene encodes a member of the ovarian tumor domain (OTU)-containing subfamily of deubiquitinating enzymes. Deubiquitinating enzymes are primarily involved in removing ubiquitin from proteins targeted for degradation. This protein may function as a negative regulator of the cell cycle in B cells.

#### For Research Use Only

Thank you for your recent purchase.  
If you would like to learn more about antibodies, please visit [www.elabscience.com](http://www.elabscience.com).

#### Focus on your research Service for life science

Applications: WB-Western Blot IHC-Immunohistochemistry IF-Immunofluorescence IP-Immunoprecipitation FC-Flow cytometry ChIP-Chromatin Immunoprecipitation Reactivity: H-Human R-Rat M-Mouse Mk-Monkey Dg-Dog Ch-Chicken Hm-Hamster Rb-Rabbit Sh-Sheep Pg-Pig Z-Zebrafish X-Xenopus C-Cow.