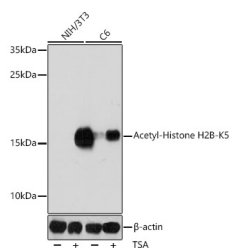


Acetyl-Histone H2B-K5 Polyclonal Antibody

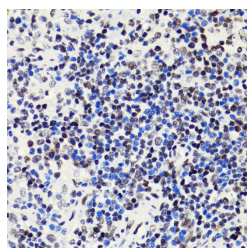
Catalog No.	E-AB-66506	Reactivity	H,M,R
Storage	Store at -20°C. Avoid freeze / thaw cycles.	Host	Rabbit
Applications	WB,IHC,IF	Isotype	IgG

Note: Centrifuge before opening to ensure complete recovery of vial contents.

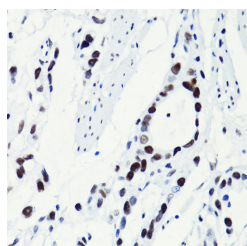
Images



Western blot analysis of extracts of various cell lines using Acetyl-Histone H2B-K5 Polyclonal Antibody at dilution of 1:1000. NIH/3T3 cells were treated by TSA (1 μ M) at 37°C for 18 hours. C6 cells were treated by TSA (1 μ M) at 37°C for 18 hours.



Immunohistochemistry of paraffin-embedded Rat spleen using Acetyl-Histone H2B-K5 Polyclonal Antibody at dilution of 1:100 (40x lens).



Immunohistochemistry of paraffin-embedded Human gastric cancer using Acetyl-Histone H2B-K5 Polyclonal Antibody at dilution of 1:100 (40x lens).

Immunogen Information

Immunogen	A synthetic acetylated peptide corresponding to residues surrounding K5 of human Histone H2B
Swissprot	Q16778
Synonyms	GL105,H2B,H2B.1,H2BFQ,H2BGL105,H2BQ,Histone H2B,HIST2H2BE

Product Information

Observed MW	16kDa
Buffer	PBS with 0.02% sodium azide, 50% glycerol, pH7.3.
Purify	Affinity purification
Dilution	WB 1:500-1:2000 IHC 1:50-1:200

For Research Use Only

Thank you for your recent purchase.
 If you would like to learn more about antibodies, please visit www.elabscience.com.

**Focus on your research
 Service for life science**

Applications:WB-Western Blot IHC-Immunohistochemistry IF-Immunofluorescence IP-Immunoprecipitation FC-Flow cytometry ChIP-Chromatin Immunoprecipitation Reactivity: H-Human R-Rat M-Mouse Mk-Monkey Dg-Dog Ch-Chicken Hm-Hamster Rb-Rabbit Sh-Sheep Pg-Pig Z-Zebrafish X-Xenopus C-Cow.