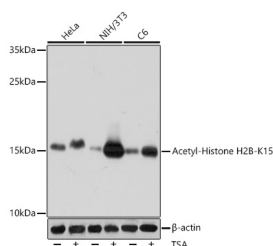


Acetyl-Histone H2B-K15 Polyclonal Antibody

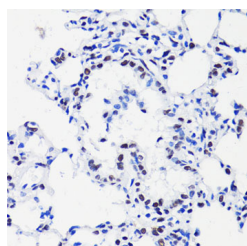
| | | | |
|---------------------|---|-------------------|--------|
| Catalog No. | E-AB-66507 | Reactivity | H,M,R |
| Storage | Store at -20°C. Avoid freeze / thaw cycles. | Host | Rabbit |
| Applications | WB,IHC,IF | Isotype | IgG |

Note: Centrifuge before opening to ensure complete recovery of vial contents.

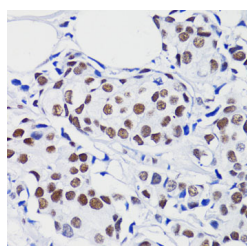
Images



Western blot analysis of extracts of various cell lines using Acetyl-Histone H2B-K15 Polyclonal Antibody at dilution of 1:1000. HeLa cells were treated by TSA (1 μ M) at 37°C for 18 hours. NIH/3T3 cells were treated by TSA (1 μ M) at 37°C for 18 hours. C6 cells were treated by TSA (1 μ M) at 37°C for 18 hours.



Immunohistochemistry of paraffin-embedded Rat lung using Acetyl-Histone H2B-K15 Polyclonal Antibody at dilution of 1:100 (40x lens).



Immunohistochemistry of paraffin-embedded Human breast cancer using

Immunogen Information

| | |
|------------------|---|
| Immunogen | A synthetic acetylated peptide corresponding to residues surrounding K15 of human Histone H2B |
| Swissprot | Q16778 |
| Synonyms | GL105,H2B,H2B.1,H2BFQ,H2BGL105,H2BQ,Histon e H2B,HIST2H2BE |

Product Information

| | |
|--------------------|---|
| Observed MW | 15kDa |
| Buffer | PBS with 0.02% sodium azide, 50% glycerol, pH7.3. |
| Purify | Affinity purification |
| Dilution | WB 1:500-1:2000 IHC 1:50-1:200 IF 1:50-1:100 |

For Research Use Only

Thank you for your recent purchase.
If you would like to learn more about antibodies, please visit www.elabscience.com.

**Focus on your research
Service for life science**

Applications: WB-Western Blot IHC-Immunohistochemistry IF-Immunofluorescence IP-Immunoprecipitation FC-Flow cytometry ChIP-Chromatin Immunoprecipitation Reactivity: H-Human R-Rat M-Mouse Mk-Monkey Dg-Dog Ch-Chicken Hm-Hamster Rb-Rabbit Sh-Sheep Pg-Pig Z-Zebrafish X-Xenopus C-Cow.

Acetyl-Histone H2B-K15 Polyclonal
Antibody at dilution of 1:100 (40x
lens).

For Research Use Only

Thank you for your recent purchase.

If you would like to learn more about antibodies, please visit www.elabscience.com.

**Focus on your research
Service for life science**

Applications: WB-Western Blot IHC-Immunohistochemistry IF-Immunofluorescence IP-Immunoprecipitation FC-Flow cytometry ChIP-
Chromatin Immunoprecipitation Reactivity: H-Human R-Rat M-Mouse Mk-Monkey Dg-Dog Ch-Chicken Hm-Hamster Rb-Rabbit Sh-
Sheep Pg-Pig Z-Zebrafish X-Xenopus C-Cow.