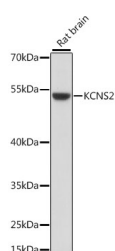


KCNS2 Polyclonal Antibody

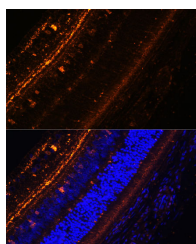
Catalog No.	E-AB-66534	Reactivity	H,M,R
Storage	Store at -20°C. Avoid freeze / thaw cycles.	Host	Rabbit
Applications	WB,IF	Isotype	IgG

Note: Centrifuge before opening to ensure complete recovery of vial contents.

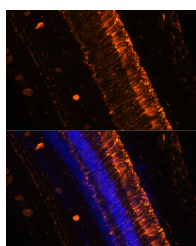
Images



Western blot analysis of extracts of Rat brain using KCNS2 Polyclonal Antibody at dilution of 1:1000.



Immunofluorescence analysis of Rat eye using KCNS2 Polyclonal Antibody at dilution of 1:100 (40x lens). Blue: DAPI for nuclear staining.



Immunofluorescence analysis of Mouse eye using KCNS2 Polyclonal Antibody at dilution of 1:100 (20x lens). Blue: DAPI for nuclear staining.

Immunogen Information

Immunogen	Recombinant fusion protein of human KCNS2 (NP_065748.1).
GeneID	3788
Swissprot	Q9ULS6
Synonyms	KCNS2,KV9.2

Product Information

Calculated MW	54kDa
Observed MW	54kDa
Buffer	PBS with 0.02% sodium azide, 50% glycerol, pH7.3.
Purify	Affinity purification
Dilution	WB 1:500-1:2000 IF 1:50-1:100

Background

KCNS2 (Potassium Voltage-Gated Channel Modifier Subfamily S Member 2) is a Protein Coding gene. Diseases associated with KCNS2 include Essential Tremor and Charcot-Marie-Tooth Disease, Recessive Intermediate B. Among its related pathways are Potassium Channels and Transmission across Chemical Synapses. Gene Ontology (GO) annotations related to this gene include ion channel activity and delayed rectifier potassium channel activity. An important paralog of this gene is KCNS3.

For Research Use Only

Thank you for your recent purchase.
If you would like to learn more about antibodies, please visit www.elabscience.com.

Focus on your research Service for life science

Applications: WB-Western Blot IHC-Immunohistochemistry IF-Immunofluorescence IP-Immunoprecipitation FC-Flow cytometry ChIP-Chromatin Immunoprecipitation Reactivity: H-Human R-Rat M-Mouse Mk-Monkey Dg-Dog Ch-Chicken Hm-Hamster Rb-Rabbit Sh-Sheep Pg-Pig Z-Zebrafish X-Xenopus C-Cow.