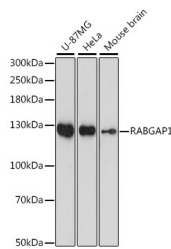


RABGAP1 Polyclonal Antibody

Catalog No.	E-AB-66585	Reactivity	H,M
Storage	Store at -20°C. Avoid freeze / thaw cycles.	Host	Rabbit
Applications	WB	Isotype	IgG

Note: Centrifuge before opening to ensure complete recovery of vial contents.

Images



Western blot analysis of extracts of various cell lines using RABGAP1 Polyclonal Antibody at dilution of 1:1000.

Immunogen Information

Immunogen	Recombinant fusion protein of human RABGAP1 (NP_036329.3).
GeneID	23637
Swissprot	Q9Y3P9
Synonyms	RABGAP1,GAPCENA,TBC1D11

Product Information

Calculated MW	28kDa/53kDa/67kDa/121kDa
Observed MW	122kDa
Buffer	PBS with 0.02% sodium azide, 50% glycerol, pH7.3.
Purify	Affinity purification
Dilution	WB 1:500-1:2000

Background

RABGAP1 (RAB GTPase Activating Protein 1) is a Protein Coding gene. Diseases associated with RABGAP1 include Warburg Micro Syndrome and Warburg Micro Syndrome 1. Among its related pathways are TBC/RABGAPs and Vesicle-mediated transport. Gene Ontology (GO) annotations related to this gene include G protein-coupled receptor activity and Rab GTPase binding. An important paralog of this gene is RABGAP1L.

For Research Use Only

Thank you for your recent purchase.
 If you would like to learn more about antibodies, please visit www.elabscience.com.

**Focus on your research
 Service for life science**

Applications:WB-Western Blot IHC-Immunohistochemistry IF-Immunofluorescence IP-Immunoprecipitation FC-Flow cytometry ChIP-Chromatin Immunoprecipitation Reactivity: H-Human R-Rat M-Mouse Mk-Monkey Dg-Dog Ch-Chicken Hm-Hamster Rb-Rabbit Sh-Sheep Pg-Pig Z-Zebrafish X-Xenopus C-Cow.