

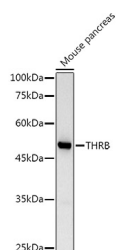
## THRB Polyclonal Antibody

**Catalog No.** E-AB-66591  
**Storage** Store at -20°C. Avoid freeze / thaw cycles.  
**Applications** WB

**Reactivity** H,M,R  
**Host** Rabbit  
**Isotype** IgG

**Note:** Centrifuge before opening to ensure complete recovery of vial contents.

### Images



Western blot analysis of extracts of Mouse pancreas using TRβ1/THRB Polyclonal Antibody at 1:1000 dilution.

### Immunogen Information

**Immunogen** Recombinant fusion protein of human THRB  
**GeneID** 7068  
**Swissprot** P10828  
**Synonyms** THRB,C-ERBA-2,C-ERBA-BETA,ERBA2,GRTH,NR1A2,PRTH,THR1,THRB1,THRB2

### Product Information

**Calculated MW** 52kDa/54kDa  
**Observed MW** 53KDa  
**Buffer** PBS with 0.05% proclin300,50% glycerol,pH7.3.  
**Purify** Affinity purification  
**Dilution** WB 1:500-1:2000

### Background

The protein encoded by this gene is a nuclear hormone receptor for triiodothyronine. It is one of the several receptors for thyroid hormone, and has been shown to mediate the biological activities of thyroid hormone. Knockout studies in mice suggest that the different receptors, while having certain extent of redundancy, may mediate different functions of thyroid hormone. Mutations in this gene are known to be a cause of generalized thyroid hormone resistance (GTHR), a syndrome characterized by goiter and high levels of circulating thyroid hormone (T3-T4), with normal or slightly elevated thyroid stimulating hormone (TSH). Several alternatively spliced transcript variants encoding the same protein have been observed for this gene.

### For Research Use Only

Thank you for your recent purchase.  
If you would like to learn more about antibodies, please visit [www.elabscience.com](http://www.elabscience.com).

### Focus on your research Service for life science

Applications:WB-Western Blot IHC-Immunohistochemistry IF-Immunofluorescence IP-Immunoprecipitation FC-Flow cytometry ChIP-Chromatin Immunoprecipitation Reactivity: H-Human R-Rat M-Mouse Mk-Monkey Dg-Dog Ch-Chicken Hm-Hamster Rb-Rabbit Sh-Sheep Pg-Pig Z-Zebrafish X-Xenopus C-Cow.