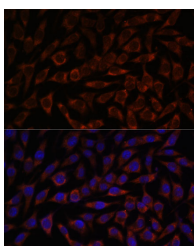


BZW2 Polyclonal Antibody

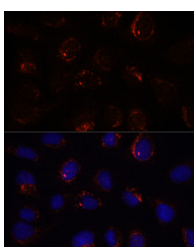
| | | | |
|---------------------|---------------------------------------------|-------------------|--------|
| Catalog No. | E-AB-66594 | Reactivity | H,M |
| Storage | Store at -20°C. Avoid freeze / thaw cycles. | Host | Rabbit |
| Applications | IF | Isotype | IgG |

Note: Centrifuge before opening to ensure complete recovery of vial contents.

Images



Immunofluorescence analysis of L929 cells using BZW2 Polyclonal Antibody at dilution of 1:100. Blue: DAPI for nuclear staining.



Immunofluorescence analysis of U-2 OS cells using BZW2 Polyclonal Antibody at dilution of 1:100. Blue: DAPI for nuclear staining.

Immunogen Information

| | |
|------------------|---------------------------------------------------------|
| Immunogen | Recombinant fusion protein of human BZW2 (NP_054757.1). |
| GeneID | 28969 |
| Swissprot | Q9Y6E2 |
| Synonyms | BZW2,HSPC028,MST017,MSTP017 |

Product Information

| | |
|-----------------|---------------------------------------------------|
| Buffer | PBS with 0.02% sodium azide, 50% glycerol, pH7.3. |
| Purify | Affinity purification |
| Dilution | IF 1:50-1:200 |

Background

May be involved in neuronal differentiation.

For Research Use Only

Thank you for your recent purchase.

If you would like to learn more about antibodies, please visit www.elabscience.com.

**Focus on your research
Service for life science**

Applications:WB-Western Blot IHC-Immunohistochemistry IF-Immunofluorescence IP-Immunoprecipitation FC-Flow cytometry ChIP-Chromatin Immunoprecipitation Reactivity: H-Human R-Rat M-Mouse Mk-Monkey Dg-Dog Ch-Chicken Hm-Hamster Rb-Rabbit Sh-Sheep Pg-Pig Z-Zebrafish X-Xenopus C-Cow.