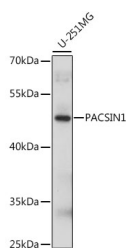


PACSIN1 Polyclonal Antibody

Catalog No.	E-AB-66596	Reactivity	H
Storage	Store at -20°C. Avoid freeze / thaw cycles.	Host	Rabbit
Applications	WB	Isotype	IgG

Note: Centrifuge before opening to ensure complete recovery of vial contents.

Images



Western blot analysis of extracts of U-251MG cells using PACSIN1 Polyclonal Antibody at dilution of 1:1000.

Immunogen Information

Immunogen	Recombinant fusion protein of human PACSIN1 (NP_065855.1).
GeneID	29993
Swissprot	Q9BY11
Synonyms	PACSIN1,SDPI

Product Information

Calculated MW	50kDa
Observed MW	51kDa
Buffer	PBS with 0.02% sodium azide, 50% glycerol, pH7.3.
Purify	Affinity purification
Dilution	WB 1:500-1:2000

Background

PACSIN1 (Protein Kinase C And Casein Kinase Substrate In Neurons 1) is a Protein Coding gene. Diseases associated with PACSIN1 include Autosomal Recessive Non-Syndromic Intellectual Disability. Among its related pathways are Vesicle-mediated transport and Clathrin-mediated endocytosis. Gene Ontology (GO) annotations related to this gene include phospholipid binding and cytoskeletal protein binding. An important paralog of this gene is PACSIN2.

For Research Use Only

Thank you for your recent purchase.
 If you would like to learn more about antibodies, please visit www.elabscience.com.

**Focus on your research
 Service for life science**

Applications: WB-Western Blot IHC-Immunohistochemistry IF-Immunofluorescence IP-Immunoprecipitation FC-Flow cytometry ChIP-Chromatin Immunoprecipitation Reactivity: H-Human R-Rat M-Mouse Mk-Monkey Dg-Dog Ch-Chicken Hm-Hamster Rb-Rabbit Sh-Sheep Pg-Pig Z-Zebrafish X-Xenopus C-Cow.