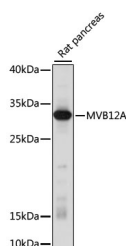


MVB12A Polyclonal Antibody

Catalog No.	E-AB-66630	Reactivity	R
Storage	Store at -20°C. Avoid freeze / thaw cycles.	Host	Rabbit
Applications	WB	Isotype	IgG

Note: Centrifuge before opening to ensure complete recovery of vial contents.

Images



Western blot analysis of extracts of Rat pancreas using MVB12A Polyclonal Antibody at dilution of 1:1000.

Immunogen Information

Immunogen	Recombinant fusion protein of human MVB12A (NP_612410.1).
GeneID	93343
Swissprot	Q96EY5
Synonyms	MVB12A,CFBP,FAM125A

Product Information

Calculated MW	24kDa/27kDa/28kDa
Observed MW	29kDa
Buffer	PBS with 0.02% sodium azide, 50% glycerol, pH7.3.
Purify	Affinity purification
Dilution	WB 1:500-1:2000

Background

MVB12A (Multivesicular Body Subunit 12A) is a Protein Coding gene. Diseases associated with MVB12A include Hemolytic Uremic Syndrome, Atypical 1 and Potocki-Shaffer Syndrome. Among its related pathways are Endocytosis. Gene Ontology (GO) annotations related to this gene include lipid binding and ubiquitin binding.

For Research Use Only

Thank you for your recent purchase.
 If you would like to learn more about antibodies, please visit www.elabscience.com.

**Focus on your research
 Service for life science**

Applications:WB-Western Blot IHC-Immunohistochemistry IF-Immunofluorescence IP-Immunoprecipitation FC-Flow cytometry ChIP-Chromatin Immunoprecipitation Reactivity: H-Human R-Rat M-Mouse Mk-Monkey Dg-Dog Ch-Chicken Hm-Hamster Rb-Rabbit Sh-Sheep Pg-Pig Z-Zebrafish X-Xenopus C-Cow.