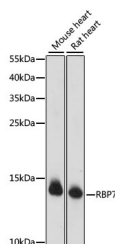


RBP7 Polyclonal Antibody

Catalog No.	E-AB-66631	Reactivity	M,R
Storage	Store at -20°C. Avoid freeze / thaw cycles.	Host	Rabbit
Applications	WB	Isotype	IgG

Note: Centrifuge before opening to ensure complete recovery of vial contents.

Images



Western blot analysis of extracts of various cell lines using RBP7 Polyclonal Antibody at dilution of 1:1000.

Immunogen Information

Immunogen	Recombinant fusion protein of human RBP7 (NP_443192.1).
GeneID	116362
Swissprot	Q96R05
Synonyms	RBP7,CRABP4,CRBP4,CRBP4V

Product Information

Calculated MW	15kDa
Observed MW	15kDa
Buffer	PBS with 0.02% sodium azide, 50% glycerol, pH7.3.
Purify	Affinity purification
Dilution	WB 1:500-1:2000

Background

The protein encoded by this gene is a member of the cellular retinol-binding protein (CRBP) family, whose members are required for vitamin A stability and metabolism. The encoded protein binds all-trans-retinol and is structurally similar to other CRBPs; however, it has a lower binding affinity for retinol than other CRBPs.

For Research Use Only

Thank you for your recent purchase.
 If you would like to learn more about antibodies, please visit www.elabscience.com.

**Focus on your research
 Service for life science**

Applications:WB-Western Blot IHC-Immunohistochemistry IF-Immunofluorescence IP-Immunoprecipitation FC-Flow cytometry ChIP-Chromatin Immunoprecipitation Reactivity: H-Human R-Rat M-Mouse Mk-Monkey Dg-Dog Ch-Chicken Hm-Hamster Rb-Rabbit Sh-Sheep Pg-Pig Z-Zebrafish X-Xenopus C-Cow.