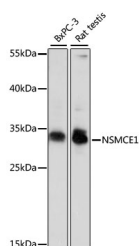


NSMCE1 Polyclonal Antibody

Catalog No.	E-AB-66637	Reactivity	H,R
Storage	Store at -20°C. Avoid freeze / thaw cycles.	Host	Rabbit
Applications	WB	Isotype	IgG

Note: Centrifuge before opening to ensure complete recovery of vial contents.

Images



Western blot analysis of extracts of various cell lines using NSMCE1 Polyclonal Antibody at dilution of 1:1000.

Immunogen Information

Immunogen	Recombinant fusion protein of human NSMCE1 (NP_659547.2).
GeneID	197370
Swissprot	Q8WV22
Synonyms	NSMCE1,NSE1,NSE1 homolog

Product Information

Calculated MW	30kDa
Observed MW	31kDa
Buffer	PBS with 0.02% sodium azide, 50% glycerol, pH7.3.
Purify	Affinity purification
Dilution	WB 1:500-1:2000

Background

NSMCE1 (NSE1 Homolog, SMC5-SMC6 Complex Component) is a Protein Coding gene. Among its related pathways are Metabolism of proteins and SUMOylation. Gene Ontology (GO) annotations related to this gene include ligase activity and ubiquitin-protein transferase activity.

For Research Use Only

Thank you for your recent purchase.
 If you would like to learn more about antibodies, please visit www.elabscience.com.

**Focus on your research
 Service for life science**

Applications:WB-Western Blot IHC-Immunohistochemistry IF-Immunofluorescence IP-Immunoprecipitation FC-Flow cytometry ChIP-Chromatin Immunoprecipitation Reactivity: H-Human R-Rat M-Mouse Mk-Monkey Dg-Dog Ch-Chicken Hm-Hamster Rb-Rabbit Sh-Sheep Pg-Pig Z-Zebrafish X-Xenopus C-Cow.