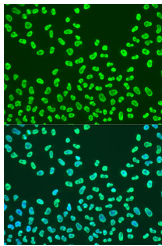


## KHDRBS2 Polyclonal Antibody

<b>Catalog No.</b>	E-AB-66638	<b>Reactivity</b>	H
<b>Storage</b>	Store at -20°C. Avoid freeze / thaw cycles.	<b>Host</b>	Rabbit
<b>Applications</b>	IF	<b>Isotype</b>	IgG

**Note:** Centrifuge before opening to ensure complete recovery of vial contents.

### Images



Immunofluorescence analysis of U2OS cells using KHDRBS2 Polyclonal Antibody at dilution of 1:100. Blue: DAPI for nuclear staining.

### Immunogen Information

<b>Immunogen</b>	A synthetic peptide of human KHDRBS2 (NP_689901.2).
<b>GeneID</b>	202559
<b>Swissprot</b>	Q5VWX1
<b>Synonyms</b>	KHDRBS2,SLM-1,SLM1

### Product Information

<b>Buffer</b>	PBS with 0.02% sodium azide, 50% glycerol, pH7.3.
<b>Purify</b>	Affinity purification
<b>Dilution</b>	IF 1:50-1:200

### Background

KHDRBS2 (KH RNA Binding Domain Containing, Signal Transduction Associated 2) is a Protein Coding gene. Diseases associated with KHDRBS2 include Atrial Septal Defect 2. Among its related pathways are Signaling by GPCR and Signaling by PTK6. Gene Ontology (GO) annotations related to this gene include nucleic acid binding and protein heterodimerization activity. An important paralog of this gene is KHDRBS3.

### For Research Use Only

Thank you for your recent purchase.  
If you would like to learn more about antibodies, please visit [www.elabscience.com](http://www.elabscience.com).

### Focus on your research Service for life science

Applications: WB-Western Blot IHC-Immunohistochemistry IF-Immunofluorescence IP-Immunoprecipitation FC-Flow cytometry ChIP-Chromatin Immunoprecipitation Reactivity: H-Human R-Rat M-Mouse Mk-Monkey Dg-Dog Ch-Chicken Hm-Hamster Rb-Rabbit Sh-Sheep Pg-Pig Z-Zebrafish X-Xenopus C-Cow.