

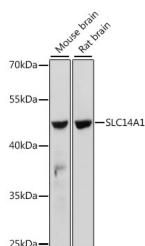
SLC14A1 Polyclonal Antibody

Catalog No. E-AB-66642
Storage Store at -20°C. Avoid freeze / thaw cycles.
Applications WB,IHC,IF

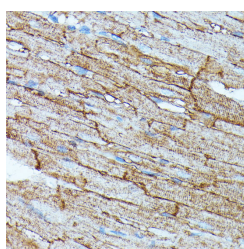
Reactivity H,M,R
Host Rabbit
Isotype IgG

Note: Centrifuge before opening to ensure complete recovery of vial contents.

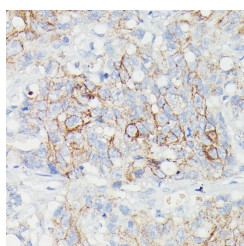
Images



Western blot analysis of extracts of various cell lines using SLC14A1 Polyclonal Antibody at dilution of 1:1000.



Immunohistochemistry of paraffin-embedded Rat heart using SLC14A1 Polyclonal Antibody at dilution of 1:100 (40x lens).



Immunohistochemistry of paraffin-embedded Human lymph node tumors using SLC14A1 Polyclonal Antibody at dilution of 1:100 (40x lens).

Immunogen Information

Immunogen A synthetic peptide of human SLC14A1 (NP_001295208.1).
GeneID 6563
Swissprot Q13336
Synonyms SLC14A1,HUT11,HsT1341,JK,RACH1,RACH2,UT-B1,UT1,UTE

Product Information

Calculated MW 42kDa/48kDa
Observed MW 43kDa
Buffer PBS with 0.02% sodium azide, 50% glycerol, pH7.3.
Purify Affinity purification
Dilution WB 1:500-1:2000 IHC 1:100-1:200 IF 1:50-1:200

Background

The protein encoded by this gene is a membrane transporter that mediates urea transport in erythrocytes. This gene forms the basis for the Kidd blood group system.

For Research Use Only

Thank you for your recent purchase.
If you would like to learn more about antibodies, please visit www.elabscience.com.

Focus on your research
Service for life science

Applications:WB-Western Blot IHC-Immunohistochemistry IF-Immunofluorescence IP-Immunoprecipitation FC-Flow cytometry ChIP-Chromatin Immunoprecipitation Reactivity: H-Human R-Rat M-Mouse Mk-Monkey Dg-Dog Ch-Chicken Hm-Hamster Rb-Rabbit Sh-Sheep Pg-Pig Z-Zebrafish X-Xenopus C-Cow.