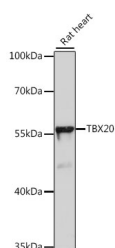


## TBX20 Polyclonal Antibody

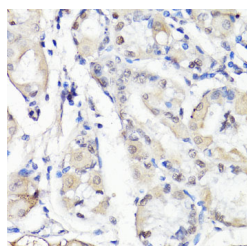
|                     |   |                   |        |
|---------------------|---|-------------------|--------|
| <b>Catalog No.</b>  | E-AB-66643                                  | <b>Reactivity</b> | H,R    |
| <b>Storage</b>      | Store at -20°C. Avoid freeze / thaw cycles. | <b>Host</b>       | Rabbit |
| <b>Applications</b> | WB,IHC                                      | <b>Isotype</b>    | IgG    |

**Note:** Centrifuge before opening to ensure complete recovery of vial contents.

### Images



Western blot analysis of extracts of Rat heart using TBX20 Polyclonal Antibody at dilution of 1:1000.



Immunohistochemistry of paraffin-embedded Human stomach using TBX20 Polyclonal Antibody at dilution of 1:100 (40x lens).

### Immunogen Information

|                  |   |
|------------------|---|
| <b>Immunogen</b> | Recombinant fusion protein of human TBX20 (NP_001071121.1). |
| <b>GeneID</b>    | 57057   |
| <b>Swissprot</b> | Q9UMR3  |
| <b>Synonyms</b>  | TBX20,ASD4,T-box 20   |

### Product Information

|                      |   |
|----------------------|---|
| <b>Calculated MW</b> | 49kDa   |
| <b>Observed MW</b>   | 56kDa   |
| <b>Buffer</b>        | PBS with 0.02% sodium azide, 50% glycerol, pH7.3. |
| <b>Purify</b>        | Affinity purification                             |
| <b>Dilution</b>      | WB 1:500-1:2000 IHC 1:50-1:200                    |

### Background

This gene encodes a T-box family member. The T-box family members share a common DNA binding domain, termed the T-box, and they are transcription factors involved in the regulation of developmental processes. This gene is essential for heart development. Mutations in this gene are associated with diverse cardiac pathologies, including defects in septation, valvulogenesis and cardiomyopathy. Alternatively spliced transcript variants encoding different isoforms have been found for this gene.

#### For Research Use Only

Thank you for your recent purchase.  
 If you would like to learn more about antibodies, please visit [www.elabscience.com](http://www.elabscience.com).

**Focus on your research  
 Service for life science**

Applications:WB-Western Blot IHC-Immunohistochemistry IF-Immunofluorescence IP-Immunoprecipitation FC-Flow cytometry ChIP-Chromatin Immunoprecipitation Reactivity: H-Human R-Rat M-Mouse Mk-Monkey Dg-Dog Ch-Chicken Hm-Hamster Rb-Rabbit Sh-Sheep Pg-Pig Z-Zebrafish X-Xenopus C-Cow.