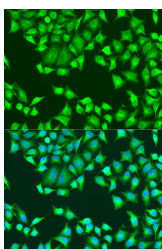


## SH2D1B Polyclonal Antibody

<b>Catalog No.</b>	E-AB-66650	<b>Reactivity</b>	H
<b>Storage</b>	Store at -20°C. Avoid freeze / thaw cycles.	<b>Host</b>	Rabbit
<b>Applications</b>	IF	<b>Isotype</b>	IgG

**Note:** Centrifuge before opening to ensure complete recovery of vial contents.

### Images



Immunofluorescence analysis of U2OS cells using SH2D1B Polyclonal Antibody at dilution of 1:100. Blue: DAPI for nuclear staining.

### Immunogen Information

<b>Immunogen</b>	Recombinant fusion protein of human SH2D1B (NP_444512.2).
<b>GeneID</b>	117157
<b>Swissprot</b>	O14796
<b>Synonyms</b>	SH2D1B,EAT2

### Product Information

<b>Buffer</b>	PBS with 0.02% sodium azide, 50% glycerol, pH7.3.
<b>Purify</b>	Affinity purification
<b>Dilution</b>	IF 1:50-1:200

### Background

SH2D1B (SH2 Domain Containing 1B) is a Protein Coding gene. Diseases associated with SH2D1B include Benign Paroxysmal Positional Nystagmus and Superior Mesenteric Artery Syndrome. Among its related pathways are Immune response Role of DAP12 receptors in NK cells and Innate Immune System. Gene Ontology (GO) annotations related to this gene include protein binding, bridging. An important paralog of this gene is INPPL1.

#### For Research Use Only

Thank you for your recent purchase.  
 If you would like to learn more about antibodies, please visit [www.elabscience.com](http://www.elabscience.com).

**Focus on your research  
 Service for life science**

Applications: WB-Western Blot IHC-Immunohistochemistry IF-Immunofluorescence IP-Immunoprecipitation FC-Flow cytometry ChIP-Chromatin Immunoprecipitation Reactivity: H-Human R-Rat M-Mouse Mk-Monkey Dg-Dog Ch-Chicken Hm-Hamster Rb-Rabbit Sh-Sheep Pg-Pig Z-Zebrafish X-Xenopus C-Cow.