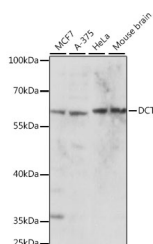


## DCT Polyclonal Antibody

<b>Catalog No.</b>	E-AB-66664	<b>Reactivity</b>	H,M
<b>Storage</b>	Store at -20°C. Avoid freeze / thaw cycles.	<b>Host</b>	Rabbit
<b>Applications</b>	WB	<b>Isotype</b>	IgG

**Note:** Centrifuge before opening to ensure complete recovery of vial contents.

### Images



Western blot analysis of extracts of various cell lines using DCT Polyclonal Antibody at dilution of 1:1000.

### Immunogen Information

<b>Immunogen</b>	Recombinant fusion protein of human DCT (NP_001913.2).
<b>GeneID</b>	1638
<b>Swissprot</b>	P40126
<b>Synonyms</b>	DCT,TRP-2,TYRP2

### Product Information

<b>Calculated MW</b>	59kDa/62kDa
<b>Observed MW</b>	59kDa
<b>Buffer</b>	PBS with 0.02% sodium azide, 50% glycerol, pH7.3.
<b>Purify</b>	Affinity purification
<b>Dilution</b>	WB 1:500-1:2000

### Background

DCT (Dopachrome Tautomerase) is a Protein Coding gene. Diseases associated with DCT include Amelanotic Melanoma and Vitiligo-Associated Multiple Autoimmune Disease Susceptibility 1. Among its related pathways are Neural Crest Differentiation and Aldosterone synthesis and secretion. Gene Ontology (GO) annotations related to this gene include oxidoreductase activity and dopachrome isomerase activity. An important paralog of this gene is TYRP1.

#### For Research Use Only

Thank you for your recent purchase.  
If you would like to learn more about antibodies, please visit [www.elabscience.com](http://www.elabscience.com).

#### Focus on your research Service for life science

Applications: WB-Western Blot IHC-Immunohistochemistry IF-Immunofluorescence IP-Immunoprecipitation FC-Flow cytometry ChIP-Chromatin Immunoprecipitation Reactivity: H-Human R-Rat M-Mouse Mk-Monkey Dg-Dog Ch-Chicken Hm-Hamster Rb-Rabbit Sh-Sheep Pg-Pig Z-Zebrafish X-Xenopus C-Cow.