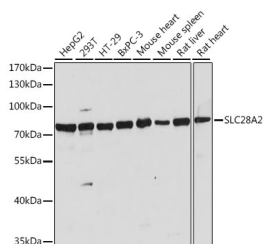


SLC28A2 Polyclonal Antibody

Catalog No.	E-AB-66684	Reactivity	H,M,R
Storage	Store at -20°C. Avoid freeze / thaw cycles.	Host	Rabbit
Applications	WB	Isotype	IgG

Note: Centrifuge before opening to ensure complete recovery of vial contents.

Images



Western blot analysis of extracts of various cell lines using SLC28A2 Polyclonal Antibody at dilution of 1:1000.

Immunogen Information

Immunogen	A synthetic peptide of human SLC28A2 (NP_004203.2).
GeneID	9153
Swissprot	O43868
Synonyms	SLC28A2,CNT2,HCNT2,HsT17153,SPNT1

Product Information

Calculated MW	71kDa
Observed MW	72kDa
Buffer	PBS with 0.02% sodium azide, 50% glycerol, pH7.3.
Purify	Affinity purification
Dilution	WB 1:500-1:2000

Background

SLC28A2 (Solute Carrier Family 28 Member 2) is a Protein Coding gene. Diseases associated with SLC28A2 include Hyperuricemia. Among its related pathways are Thiopurine Pathway, Pharmacokinetics/Pharmacodynamics and Transport of vitamins, nucleosides, and related molecules. Gene Ontology (GO) annotations related to this gene include nucleoside binding and purine nucleoside transmembrane transporter activity. An important paralog of this gene is SLC28A1.

For Research Use Only

Thank you for your recent purchase.
 If you would like to learn more about antibodies, please visit www.elabscience.com.

**Focus on your research
 Service for life science**

Applications:WB-Western Blot IHC-Immunohistochemistry IF-Immunofluorescence IP-Immunoprecipitation FC-Flow cytometry ChIP-Chromatin Immunoprecipitation Reactivity: H-Human R-Rat M-Mouse Mk-Monkey Dg-Dog Ch-Chicken Hm-Hamster Rb-Rabbit Sh-Sheep Pg-Pig Z-Zebrafish X-Xenopus C-Cow.