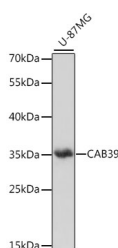


CAB39 Polyclonal Antibody

Catalog No.	E-AB-66698	Reactivity	H
Storage	Store at -20°C. Avoid freeze / thaw cycles.	Host	Rabbit
Applications	WB	Isotype	IgG

Note: Centrifuge before opening to ensure complete recovery of vial contents.

Images



Western blot analysis of extracts of U-87MG cells using CAB39 Polyclonal Antibody at dilution of 1:1000.

Immunogen Information

Immunogen	A synthetic peptide of human CAB39 (NP_001124321.1).
GeneID	51719
Swissprot	Q9Y376
Synonyms	CAB39, CGI-66, MO25

Product Information

Calculated MW	39kDa
Observed MW	35kDa
Buffer	PBS with 0.02% sodium azide, 50% glycerol, pH7.3.
Purify	Affinity purification
Dilution	WB 1:500-1:2000

Background

Peutz-Jeghers Syndrome (PJS) is a rare hereditary disease characterized by melanocytic macules of the lips, gastrointestinal hamartomatous polyps and an increased risk for many classes of cancer. The serine/threonine kinase LKB1 (also designated STK11) has been identified as the gene mutated in PJS. LKB1 activity increases upon the binding of a regulatory complex consisting of the STE20-related adaptor-alpha (STRAD alpha) pseudo kinase and the calcium binding protein 39 (MO25 alpha). STRAD and MO25 determine the subcellular localization of LKB1 by initiating its translocation from the nucleus to the cytoplasm, thus regulating the tumor suppressor activity of LKB1. The LKB1/STRAD/MO25 complex acts as an AMP-activated protein kinase kinase (AMPKK).

For Research Use Only

Thank you for your recent purchase.
If you would like to learn more about antibodies, please visit www.elabscience.com.

Focus on your research Service for life science

Applications: WB-Western Blot IHC-Immunohistochemistry IF-Immunofluorescence IP-Immunoprecipitation FC-Flow cytometry ChIP-Chromatin Immunoprecipitation Reactivity: H-Human R-Rat M-Mouse Mk-Monkey Dg-Dog Ch-Chicken Hm-Hamster Rb-Rabbit Sh-Sheep Pg-Pig Z-Zebrafish X-Xenopus C-Cow.