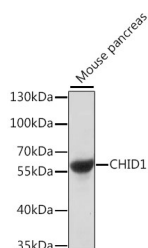


CHID1 Polyclonal Antibody

Catalog No.	E-AB-66701	Reactivity	M
Storage	Store at -20°C. Avoid freeze / thaw cycles.	Host	Rabbit
Applications	WB	Isotype	IgG

Note: Centrifuge before opening to ensure complete recovery of vial contents.

Images



Western blot analysis of extracts of Mouse pancreas using CHID1 Polyclonal Antibody at dilution of 1:1000.

Immunogen Information

Immunogen	Recombinant fusion protein of human CHID1 (NP_076436.3).
GeneID	66005
Swissprot	Q9BWS9
Synonyms	CHID1, GL008, SI-CLP, SICLP

Product Information

Calculated MW	41kDa/44kDa/47kDa
Observed MW	55kDa
Buffer	PBS with 0.02% sodium azide, 50% glycerol, pH7.3.
Purify	Affinity purification
Dilution	WB 1:500-1:2000

Background

CHID1 (Chitinase Domain Containing 1) is a Protein Coding gene. Among its related pathways are Response to elevated platelet cytosolic Ca²⁺. Gene Ontology (GO) annotations related to this gene include hydrolase activity, hydrolyzing O-glycosyl compounds and chitinase activity. An important paralog of this gene is CHIA.

For Research Use Only

Thank you for your recent purchase.
If you would like to learn more about antibodies, please visit www.elabscience.com.

Focus on your research Service for life science

Applications: WB-Western Blot IHC-Immunohistochemistry IF-Immunofluorescence IP-Immunoprecipitation FC-Flow cytometry ChIP-Chromatin Immunoprecipitation Reactivity: H-Human R-Rat M-Mouse Mk-Monkey Dg-Dog Ch-Chicken Hm-Hamster Rb-Rabbit Sh-Sheep Pg-Pig Z-Zebrafish X-Xenopus C-Cow.