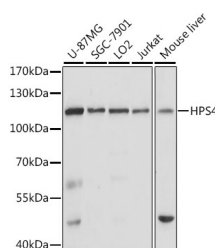


## HPS4 Polyclonal Antibody

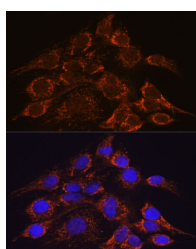
<b>Catalog No.</b>	E-AB-66705	<b>Reactivity</b>	H,M,R
<b>Storage</b>	Store at -20°C. Avoid freeze / thaw cycles.	<b>Host</b>	Rabbit
<b>Applications</b>	WB,IF	<b>Isotype</b>	IgG

**Note:** Centrifuge before opening to ensure complete recovery of vial contents.

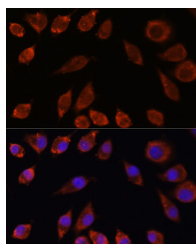
### Images



Western blot analysis of extracts of various cell lines using HPS4 Polyclonal Antibody at dilution of 1:1000.



Immunofluorescence analysis of C6 cells using HPS4 Polyclonal Antibody at dilution of 1:100. Blue: DAPI for nuclear staining.



Immunofluorescence analysis of L929 cells using HPS4 Polyclonal Antibody at dilution of 1:100. Blue: DAPI for nuclear staining.

### Immunogen Information

<b>Immunogen</b>	A synthetic peptide of human HPS4 (NP_690054.1).
<b>GeneID</b>	89781
<b>Swissprot</b>	Q9NQG7
<b>Synonyms</b>	HPS4,BLOC3S2,LE

### Product Information

<b>Calculated MW</b>	58kDa/76kDa/78kDa
<b>Observed MW</b>	115kDa
<b>Buffer</b>	PBS with 0.02% sodium azide, 50% glycerol, pH7.3.
<b>Purify</b>	Affinity purification
<b>Dilution</b>	WB 1:500-1:2000 IF 1:50-1:200

### Background

This gene encodes a protein component of biogenesis of lysosome-related organelles complexes (BLOC). BLOC complexes are important for the formation of endosomal-lysosomal organelles such as melanosomes and platelet dense granules. Mutations in this gene result in subtype 4 of Hermansky-Pudlak syndrome, a form of albinism. Alternative splicing results in multiple transcript variants.

### For Research Use Only

Thank you for your recent purchase.  
If you would like to learn more about antibodies, please visit [www.elabscience.com](http://www.elabscience.com).

### Focus on your research Service for life science

Applications: WB-Western Blot IHC-Immunohistochemistry IF-Immunofluorescence IP-Immunoprecipitation FC-Flow cytometry ChIP-Chromatin Immunoprecipitation Reactivity: H-Human R-Rat M-Mouse Mk-Monkey Dg-Dog Ch-Chicken Hm-Hamster Rb-Rabbit Sh-Sheep Pg-Pig Z-Zebrafish X-Xenopus C-Cow.