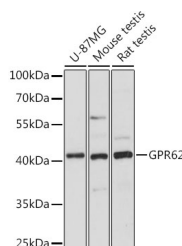


## GPR62 Polyclonal Antibody

<b>Catalog No.</b>	E-AB-66707	<b>Reactivity</b>	H,M,R
<b>Storage</b>	Store at -20°C. Avoid freeze / thaw cycles.	<b>Host</b>	Rabbit
<b>Applications</b>	WB	<b>Isotype</b>	IgG

**Note:** Centrifuge before opening to ensure complete recovery of vial contents.

### Images



Western blot analysis of extracts of various cell lines using GPR62 Polyclonal Antibody at dilution of 1:1000.

### Immunogen Information

<b>Immunogen</b>	A synthetic peptide of human GPR62 (NP_543141.3).
<b>GeneID</b>	118442
<b>Swissprot</b>	Q9BZJ7
<b>Synonyms</b>	GPR62, GPCR8, KPG_005

### Product Information

<b>Calculated MW</b>	37kDa
<b>Observed MW</b>	41kDa
<b>Buffer</b>	PBS with 0.02% sodium azide, 50% glycerol, pH7.3.
<b>Purify</b>	Affinity purification
<b>Dilution</b>	WB 1:500-1:2000

### Background

GPR62 (G Protein-Coupled Receptor 62) is a Protein Coding gene. Among its related pathways are GPCRs, Other. GO annotations related to this gene include G-protein coupled receptor activity. An important paralog of this gene is GPR61.

#### For Research Use Only

Thank you for your recent purchase.  
If you would like to learn more about antibodies, please visit [www.elabscience.com](http://www.elabscience.com).

#### Focus on your research Service for life science

Applications: WB-Western Blot IHC-Immunohistochemistry IF-Immunofluorescence IP-Immunoprecipitation FC-Flow cytometry ChIP-Chromatin Immunoprecipitation Reactivity: H-Human R-Rat M-Mouse Mk-Monkey Dg-Dog Ch-Chicken Hm-Hamster Rb-Rabbit Sh-Sheep Pg-Pig Z-Zebrafish X-Xenopus C-Cow.