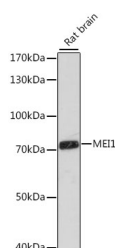


MEI1 Polyclonal Antibody

Catalog No.	E-AB-66710	Reactivity	H,M,R
Storage	Store at -20°C. Avoid freeze / thaw cycles.	Host	Rabbit
Applications	WB	Isotype	IgG

Note: Centrifuge before opening to ensure complete recovery of vial contents.

Images



Western blot analysis of extracts of Rat brain using MEI1 Polyclonal Antibody at dilution of 1:1000.

Immunogen Information

Immunogen	Recombinant fusion protein of human MEI1 (NP_689726.3).
GeneID	150365
Swissprot	Q5TIA1
Synonyms	MEI1, SPATA38

Product Information

Calculated MW	25kDa/49kDa/53kDa/62kDa/67kDa/71kDa/141kDa
Observed MW	71kDa
Buffer	PBS with 0.02% sodium azide, 50% glycerol, pH7.3.
Purify	Affinity purification
Dilution	WB 1:500-1:2000

Background

MEI1 (Meiotic Double-Stranded Break Formation Protein 1) is a Protein Coding gene. Diseases associated with MEI1 include Hydatidiform Mole, Recurrent, 3 and Hydatidiform Mole, Recurrent, 1. Gene Ontology (GO) annotations related to this gene include binding. An important paralog of this gene is BCL2L11.

For Research Use Only

Thank you for your recent purchase.
If you would like to learn more about antibodies, please visit www.elabscience.com.

Focus on your research Service for life science

Applications: WB-Western Blot IHC-Immunohistochemistry IF-Immunofluorescence IP-Immunoprecipitation FC-Flow cytometry ChIP-Chromatin Immunoprecipitation Reactivity: H-Human R-Rat M-Mouse Mk-Monkey Dg-Dog Ch-Chicken Hm-Hamster Rb-Rabbit Sh-Sheep Pg-Pig Z-Zebrafish X-Xenopus C-Cow.