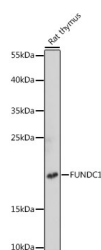


FUNDC1 Polyclonal Antibody

Catalog No.	E-AB-66756	Reactivity	R
Storage	Store at -20°C. Avoid freeze / thaw cycles.	Host	Rabbit
Applications	WB	Isotype	IgG

Note: Centrifuge before opening to ensure complete recovery of vial contents.

Images



Western blot analysis of extracts of Rat thymus using FUNDC1 Polyclonal Antibody at dilution of 1:1000.

Immunogen Information

Immunogen	A synthetic peptide of human FUNDC1 (NP_776155.1).
GeneID	139341
Swissprot	Q8IVP5
Synonyms	FUNDC1

Product Information

Calculated MW	17kDa
Observed MW	20kDa
Buffer	PBS with 0.02% sodium azide, 50% glycerol, pH7.3.
Purify	Affinity purification
Dilution	WB 1:500-1:2000

Background

This gene encodes a protein with a FUN14 superfamily domain. The function of the encoded protein is not known.

For Research Use Only

Thank you for your recent purchase.

If you would like to learn more about antibodies, please visit www.elabscience.com.

**Focus on your research
 Service for life science**

Applications: WB-Western Blot IHC-Immunohistochemistry IF-Immunofluorescence IP-Immunoprecipitation FC-Flow cytometry ChIP-Chromatin Immunoprecipitation Reactivity: H-Human R-Rat M-Mouse Mk-Monkey Dg-Dog Ch-Chicken Hm-Hamster Rb-Rabbit Sh-Sheep Pg-Pig Z-Zebrafish X-Xenopus C-Cow.