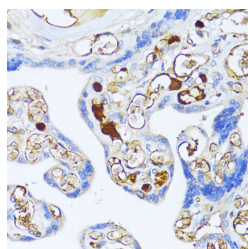


A2M Polyclonal Antibody

Catalog No.	E-AB-66765	Reactivity	H
Storage	Store at -20°C. Avoid freeze / thaw cycles.	Host	Rabbit
Applications	IHC	Isotype	IgG

Note: Centrifuge before opening to ensure complete recovery of vial contents.

Images



Immunohistochemistry of paraffin-embedded Human placenta using A2M Polyclonal Antibody at dilution of 1:100 (40x lens).

Immunogen Information

Immunogen	Recombinant fusion protein of human A2M (NP_000005.2).
GeneID	2
Swissprot	P01023
Synonyms	A2M,A2MD,CPAMD5,FWP007,S863-7

Product Information

Buffer	PBS with 0.02% sodium azide, 50% glycerol, pH7.3.
Purify	Affinity purification
Dilution	IHC 1:50-1:200

Background

The protein encoded by this gene is a protease inhibitor and cytokine transporter. It uses a bait-and-trap mechanism to inhibit a broad spectrum of proteases, including trypsin, thrombin and collagenase. It can also inhibit inflammatory cytokines, and it thus disrupts inflammatory cascades. Mutations in this gene are a cause of alpha-2-macroglobulin deficiency. This gene is implicated in Alzheimer's disease (AD) due to its ability to mediate the clearance and degradation of A-beta, the major component of beta-amyloid deposits. A related pseudogene, which is also located on the p arm of chromosome 12, has been identified.

For Research Use Only

Thank you for your recent purchase.
 If you would like to learn more about antibodies, please visit www.elabscience.com.

**Focus on your research
 Service for life science**

Applications: WB-Western Blot IHC-Immunohistochemistry IF-Immunofluorescence IP-Immunoprecipitation FC-Flow cytometry ChIP-Chromatin Immunoprecipitation Reactivity: H-Human R-Rat M-Mouse Mk-Monkey Dg-Dog Ch-Chicken Hm-Hamster Rb-Rabbit Sh-Sheep Pg-Pig Z-Zebrafish X-Xenopus C-Cow.