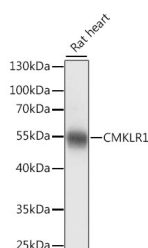


## CMKLR1 Polyclonal Antibody

|                     |   |                   |        |
|---------------------|---|-------------------|--------|
| <b>Catalog No.</b>  | E-AB-66779                                  | <b>Reactivity</b> | M,R    |
| <b>Storage</b>      | Store at -20°C. Avoid freeze / thaw cycles. | <b>Host</b>       | Rabbit |
| <b>Applications</b> | WB  | <b>Isotype</b>    | IgG    |

**Note:** Centrifuge before opening to ensure complete recovery of vial contents.

### Images



Western blot analysis of extracts of Rat heart using CMKLR1 Polyclonal Antibody at dilution of 1:1000.

### Immunogen Information

|                  |   |
|------------------|---|
| <b>Immunogen</b> | A synthetic peptide of human CMKLR1 (NP_001135815.1). |
| <b>GeneID</b>    | 1240  |
| <b>Swissprot</b> | Q99788  |
| <b>Synonyms</b>  | CMKLR1,CHEMERINR,ChemR23,DEZ,RVER1                    |

### Product Information

|                      |   |
|----------------------|---|
| <b>Calculated MW</b> | 42kDa   |
| <b>Observed MW</b>   | 55kDa   |
| <b>Buffer</b>        | PBS with 0.02% sodium azide, 50% glycerol, pH7.3. |
| <b>Purify</b>        | Affinity purification                             |
| <b>Dilution</b>      | WB 1:500-1:2000                                   |

### Background

Receptor for the chemoattractant adipokine chemerin/RARRES2 and for the omega-3 fatty acid derived molecule resolvin E1. Interaction with RARRES2 induces activation of intracellular signaling molecules, such as SKY, MAPK1/3 (ERK1/2), MAPK14/P38MAPK and PI3K leading to multifunctional effects, like, reduction of immune responses, enhancing of adipogenesis and angiogenesis. Resolvin E1 down-regulates cytokine production in macrophages by reducing the activation of MAPK1/3 (ERK1/2) and NF-kappa-B. Positively regulates adipogenesis and adipocyte metabolism. Acts as a coreceptor for several SIV strains (SIVMAC316, SIVMAC239, SIVMACL7E-FR and SIVSM62A), as well as a primary HIV-1 strain (92UG024-2).

#### For Research Use Only

Thank you for your recent purchase.  
 If you would like to learn more about antibodies, please visit [www.elabscience.com](http://www.elabscience.com).

**Focus on your research  
 Service for life science**

Applications:WB-Western Blot IHC-Immunohistochemistry IF-Immunofluorescence IP-Immunoprecipitation FC-Flow cytometry ChIP-Chromatin Immunoprecipitation Reactivity: H-Human R-Rat M-Mouse Mk-Monkey Dg-Dog Ch-Chicken Hm-Hamster Rb-Rabbit Sh-Sheep Pg-Pig Z-Zebrafish X-Xenopus C-Cow.