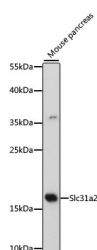


Slc31a2 Polyclonal Antibody

Catalog No.	E-AB-66781	Reactivity	M
Storage	Store at -20°C. Avoid freeze / thaw cycles.	Host	Rabbit
Applications	WB	Isotype	IgG

Note: Centrifuge before opening to ensure complete recovery of vial contents.

Images



Western blot analysis of extracts of Mouse pancreas using Slc31a2 Polyclonal Antibody at dilution of 1:500.

Immunogen Information

Immunogen	A synthetic peptide of mouse Slc31a2 (NP_001277447.1).
GeneID	20530
Swissprot	O15432
Synonyms	SLC31A2,COPT2,CTR2,hCTR2,AI604396,Slc31a2

Product Information

Calculated MW	15kDa
Observed MW	16kDa
Buffer	PBS with 0.02% sodium azide, 50% glycerol, pH7.3.
Purify	Affinity purification
Dilution	WB 1:500-1:2000

Background

SLC31A2 (Solute Carrier Family 31 Member 2) is a Protein Coding gene. Diseases associated with SLC31A2 include Cone-Rod Dystrophy 2 and Noonan Syndrome 3. Among its related pathways are Copper homeostasis. Gene Ontology (GO) annotations related to this gene include copper ion transmembrane transporter activity. An important paralog of this gene is SLC31A1.

For Research Use Only

Thank you for your recent purchase.
If you would like to learn more about antibodies, please visit www.elabscience.com.

Focus on your research Service for life science

Applications: WB-Western Blot IHC-Immunohistochemistry IF-Immunofluorescence IP-Immunoprecipitation FC-Flow cytometry ChIP-Chromatin Immunoprecipitation Reactivity: H-Human R-Rat M-Mouse Mk-Monkey Dg-Dog Ch-Chicken Hm-Hamster Rb-Rabbit Sh-Sheep Pg-Pig Z-Zebrafish X-Xenopus C-Cow.