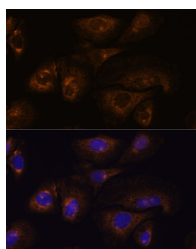


## PRSS8 Polyclonal Antibody

<b>Catalog No.</b>	E-AB-66808	<b>Reactivity</b>	H,M,R
<b>Storage</b>	Store at -20°C. Avoid freeze / thaw cycles.	<b>Host</b>	Rabbit
<b>Applications</b>	IF	<b>Isotype</b>	IgG

**Note:** Centrifuge before opening to ensure complete recovery of vial contents.

### Images



Immunofluorescence analysis of U-2 OS cells using PRSS8 Polyclonal Antibody at dilution of 1:100. Blue: DAPI for nuclear staining.

### Immunogen Information

<b>Immunogen</b>	A synthetic peptide of human PRSS8 (NP_002764.1).
<b>GeneID</b>	5652
<b>Swissprot</b>	Q16651
<b>Synonyms</b>	PRSS8,CAP1,PROSTASIN,prostasin

### Product Information

<b>Buffer</b>	PBS with 0.02% sodium azide, 50% glycerol, pH7.3.
<b>Purify</b>	Affinity purification
<b>Dilution</b>	IF 1:50-1:200

### Background

This gene encodes a member of the peptidase S1 or chymotrypsin family of serine proteases. The encoded preproprotein is proteolytically processed to generate light and heavy chains that associate via a disulfide bond to form the heterodimeric enzyme. This enzyme is highly expressed in prostate epithelia and is one of several proteolytic enzymes found in seminal fluid. This protease exhibits trypsin-like substrate specificity, cleaving protein substrates at the carboxyl terminus of lysine or arginine residues. The encoded protease partially mediates proteolytic activation of the epithelial sodium channel, a regulator of sodium balance, and may also play a role in epithelial barrier formation.

#### For Research Use Only

Thank you for your recent purchase.  
 If you would like to learn more about antibodies, please visit [www.elabscience.com](http://www.elabscience.com).

**Focus on your research  
 Service for life science**

Applications:WB-Western Blot IHC-Immunohistochemistry IF-Immunofluorescence IP-Immunoprecipitation FC-Flow cytometry ChIP-Chromatin Immunoprecipitation Reactivity: H-Human R-Rat M-Mouse Mk-Monkey Dg-Dog Ch-Chicken Hm-Hamster Rb-Rabbit Sh-Sheep Pg-Pig Z-Zebrafish X-Xenopus C-Cow.