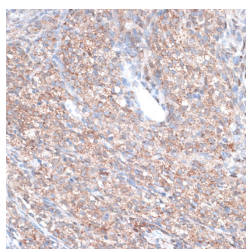


## PLAA Polyclonal Antibody

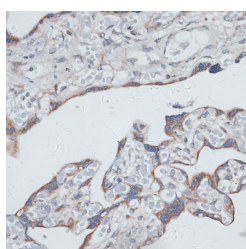
<b>Catalog No.</b>	E-AB-66827	<b>Reactivity</b>	H,M,R
<b>Storage</b>	Store at -20°C. Avoid freeze / thaw cycles.	<b>Host</b>	Rabbit
<b>Applications</b>	IHC	<b>Isotype</b>	IgG

**Note:** Centrifuge before opening to ensure complete recovery of vial contents.

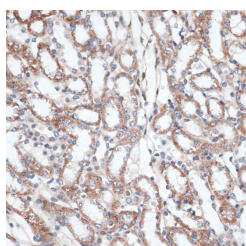
### Images



Immunohistochemistry of paraffin-embedded Rat ovary using PLAA Polyclonal Antibody at dilution of 1:100 (40x lens).



Immunohistochemistry of paraffin-embedded Human placenta using PLAA Polyclonal Antibody at dilution of 1:100 (40x lens).



Immunohistochemistry of paraffin-embedded Mouse kidney using PLAA Polyclonal Antibody at dilution of 1:100 (40x lens).

### Immunogen Information

<b>Immunogen</b>	Recombinant fusion protein of human PLAA (NP_001026859.1).
<b>GeneID</b>	9373
<b>Swissprot</b>	Q9Y263
<b>Synonyms</b>	PLAA,DOA1,PLA2P,PLAP,NDMSBA

### Product Information

<b>Buffer</b>	PBS with 0.02% sodium azide, 50% glycerol, pH7.3.
<b>Purify</b>	Affinity purification
<b>Dilution</b>	IHC 1:50-1:200

### Background

PLAA (Phospholipase A2 Activating Protein) is a Protein Coding gene. Diseases associated with PLAA include Neurodevelopmental Disorder With Progressive Microcephaly, Spasticity, And Brain Anomalies and Conjugate Gaze Palsy. Among its related pathways are Protein processing in endoplasmic reticulum. Gene Ontology (GO) annotations related to this gene include binding and phospholipase A2 activator activity.

#### For Research Use Only

Thank you for your recent purchase.  
 If you would like to learn more about antibodies, please visit [www.elabscience.com](http://www.elabscience.com).

**Focus on your research  
 Service for life science**

Applications:WB-Western Blot IHC-Immunohistochemistry IF-Immunofluorescence IP-Immunoprecipitation FC-Flow cytometry ChIP-Chromatin Immunoprecipitation Reactivity: H-Human R-Rat M-Mouse Mk-Monkey Dg-Dog Ch-Chicken Hm-Hamster Rb-Rabbit Sh-Sheep Pg-Pig Z-Zebrafish X-Xenopus C-Cow.