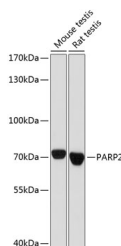


## PARP2 Polyclonal Antibody

<b>Catalog No.</b>	E-AB-66828	<b>Reactivity</b>	M,R
<b>Storage</b>	Store at -20°C. Avoid freeze / thaw cycles.	<b>Host</b>	Rabbit
<b>Applications</b>	WB	<b>Isotype</b>	IgG

**Note:** Centrifuge before opening to ensure complete recovery of vial contents.

### Images



Western blot analysis of extracts of various cell lines using PARP2 Polyclonal Antibody at dilution of 1:1000.

### Immunogen Information

<b>Immunogen</b>	A synthetic peptide of human PARP2 (NP_001036083.1).
<b>GeneID</b>	10038
<b>Swissprot</b>	Q9UGN5
<b>Synonyms</b>	PARP2,ADPRT2,ADPRTL2,ADPRTL3,ARTD2,PARP-2,pADPRT-2

### Product Information

<b>Calculated MW</b>	64kDa/66kDa
<b>Observed MW</b>	Refer to figures
<b>Buffer</b>	PBS with 0.02% sodium azide, 50% glycerol, pH7.3.
<b>Purify</b>	Affinity purification
<b>Dilution</b>	WB 1:500-1:2000

### Background

This gene encodes poly(ADP-ribose)transferase-like 2 protein, which contains a catalytic domain and is capable of catalyzing a poly(ADP-ribose)ation reaction. This protein has a catalytic domain which is homologous to that of poly (ADP-ribose) transferase, but lacks an N-terminal DNA binding domain which activates the C-terminal catalytic domain of poly (ADP-ribose) transferase. The basic residues within the N-terminal region of this protein may bear potential DNA-binding properties, and may be involved in the nuclear and/or nucleolar targeting of the protein. Two alternatively spliced transcript variants encoding distinct isoforms have been found.

#### For Research Use Only

Thank you for your recent purchase.

If you would like to learn more about antibodies, please visit [www.elabscience.com](http://www.elabscience.com).

**Focus on your research  
 Service for life science**

Applications:WB-Western Blot IHC-Immunohistochemistry IF-Immunofluorescence IP-Immunoprecipitation FC-Flow cytometry ChIP-Chromatin Immunoprecipitation Reactivity: H-Human R-Rat M-Mouse Mk-Monkey Dg-Dog Ch-Chicken Hm-Hamster Rb-Rabbit Sh-Sheep Pg-Pig Z-Zebrafish X-Xenopus C-Cow.