

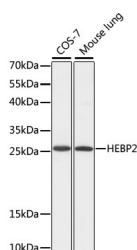
HEBP2 Polyclonal Antibody

Catalog No. E-AB-66836
Storage Store at -20°C. Avoid freeze / thaw cycles.
Applications WB,IF

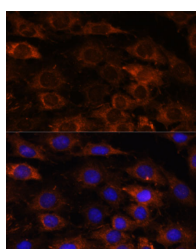
Reactivity H,M,R
Host Rabbit
Isotype IgG

Note: Centrifuge before opening to ensure complete recovery of vial contents.

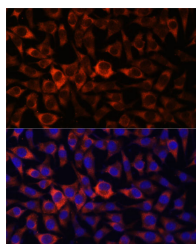
Images



Western blot analysis of extracts of various cell lines using HEBP2 Polyclonal Antibody at dilution of 1:1000.



Immunofluorescence analysis of C6 cells using HEBP2 Polyclonal Antibody at dilution of 1:100. Blue: DAPI for nuclear staining.



Immunofluorescence analysis of L929 cells using HEBP2 Polyclonal Antibody at dilution of 1:100. Blue: DAPI for nuclear staining.

Immunogen Information

Immunogen Recombinant fusion protein of human HEBP2 (NP_055135.1).
GeneID 23593
Swissprot Q9Y5Z4
Synonyms HEBP2,C6ORF34B,C6orf34,PP23,SOUL

Product Information

Calculated MW 20kDa/22kDa
Observed MW 25kDa
Buffer PBS with 0.02% sodium azide, 50% glycerol, pH7.3.
Purify Affinity purification
Dilution WB 1:500-1:2000 IF 1:50-1:200

Background

The protein encoded by this gene is found predominately in the cytoplasm, where it plays a role in the collapse of mitochondrial membrane potential (MMP) prior to necrotic cell death. The encoded protein enhances outer and inner mitochondrial membrane permeabilization, especially under conditions of oxidative stress.

For Research Use Only

Thank you for your recent purchase.
If you would like to learn more about antibodies, please visit www.elabscience.com.

Focus on your research
Service for life science

Applications: WB-Western Blot IHC-Immunohistochemistry IF-Immunofluorescence IP-Immunoprecipitation FC-Flow cytometry ChIP-Chromatin Immunoprecipitation Reactivity: H-Human R-Rat M-Mouse Mk-Monkey Dg-Dog Ch-Chicken Hm-Hamster Rb-Rabbit Sh-Sheep Pg-Pig Z-Zebrafish X-Xenopus C-Cow.