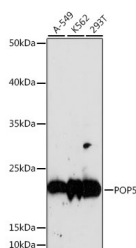


POP5 Polyclonal Antibody

Catalog No.	E-AB-66843	Reactivity	H,R
Storage	Store at -20°C. Avoid freeze / thaw cycles.	Host	Rabbit
Applications	WB	Isotype	IgG

Note: Centrifuge before opening to ensure complete recovery of vial contents.

Images



Western blot analysis of extracts of various cell lines using POP5 Polyclonal Antibody at dilution of 1:1000.

Immunogen Information

Immunogen	A synthetic peptide of human POP5 (NP_057002.2).
GeneID	51367
Swissprot	Q969H6
Synonyms	POP5,HSPC004,RPP2,RPP20,hPop5

Product Information

Calculated MW	12kDa/18kDa
Observed MW	19kDa
Buffer	PBS with 0.02% sodium azide, 50% glycerol, pH7.3.
Purify	Affinity purification
Dilution	WB 1:500-1:2000

Background

POP5 (POP5 Homolog, Ribonuclease P/MRP Subunit) is a Protein Coding gene. Diseases associated with POP5 include Cartilage-Hair Hypoplasia. Among its related pathways are tRNA processing and Gene Expression. Gene Ontology (GO) annotations related to this gene include ribonuclease activity and ribonuclease P activity.

For Research Use Only

Thank you for your recent purchase.
 If you would like to learn more about antibodies, please visit www.elabscience.com.

**Focus on your research
 Service for life science**

Applications:WB-Western Blot IHC-Immunohistochemistry IF-Immunofluorescence IP-Immunoprecipitation FC-Flow cytometry ChIP-Chromatin Immunoprecipitation Reactivity: H-Human R-Rat M-Mouse Mk-Monkey Dg-Dog Ch-Chicken Hm-Hamster Rb-Rabbit Sh-Sheep Pg-Pig Z-Zebrafish X-Xenopus C-Cow.