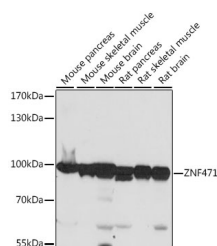


ZNF471 Polyclonal Antibody

Catalog No.	E-AB-66852	Reactivity	M,R
Storage	Store at -20°C. Avoid freeze / thaw cycles.	Host	Rabbit
Applications	WB	Isotype	IgG

Note: Centrifuge before opening to ensure complete recovery of vial contents.

Images



Western blot analysis of extracts of various cell lines using ZNF471 Polyclonal Antibody at dilution of 1:1000.

Immunogen Information

Immunogen	Recombinant fusion protein of human ZNF471 (NP_065864.2).
GeneID	57573
Swissprot	Q9BX82
Synonyms	ZNF471,ERP1,Z1971

Product Information

Calculated MW	28kDa/73kDa
Observed MW	90kDa
Buffer	PBS with 0.02% sodium azide, 50% glycerol, pH7.3.
Purify	Affinity purification
Dilution	WB 1:500-1:2000

Background

This protein belongs to the krueppel C2H2-type zinc-finger protein family. It may be involved in transcriptional regulation. The subcellular location of this protein is Nucleus. It contains 15 C2H2-type zinc fingers and one KRAB domain.

For Research Use Only

Thank you for your recent purchase.
If you would like to learn more about antibodies, please visit www.elabscience.com.

Focus on your research Service for life science

Applications: WB-Western Blot IHC-Immunohistochemistry IF-Immunofluorescence IP-Immunoprecipitation FC-Flow cytometry ChIP-Chromatin Immunoprecipitation Reactivity: H-Human R-Rat M-Mouse Mk-Monkey Dg-Dog Ch-Chicken Hm-Hamster Rb-Rabbit Sh-Sheep Pg-Pig Z-Zebrafish X-Xenopus C-Cow.