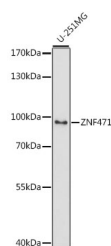


ZNF471 Polyclonal Antibody

Catalog No.	E-AB-66853	Reactivity	H
Storage	Store at -20°C. Avoid freeze / thaw cycles.	Host	Rabbit
Applications	WB	Isotype	IgG

Note: Centrifuge before opening to ensure complete recovery of vial contents.

Images



Western blot analysis of extracts of U-251MG cells using ZNF471 Polyclonal Antibody at dilution of 1:1000.

Immunogen Information

Immunogen	Recombinant fusion protein of human ZNF471 (NP_065864.2).
GeneID	57573
Swissprot	Q9BX82
Synonyms	ZNF471,ERP1,Z1971

Product Information

Calculated MW	28kDa/73kDa
Observed MW	90kDa
Buffer	PBS with 0.02% sodium azide, 50% glycerol, pH7.3.
Purify	Affinity purification
Dilution	WB 1:500-1:2000

Background

This protein belongs to the krueppel C2H2-type zinc-finger protein family. It may be involved in transcriptional regulation. The subcellular location of this protein is Nucleus. It contains 15 C2H2-type zinc fingers and one KRAB domain.

For Research Use Only

Thank you for your recent purchase.
 If you would like to learn more about antibodies, please visit www.elabscience.com.

**Focus on your research
 Service for life science**

Applications: WB-Western Blot IHC-Immunohistochemistry IF-Immunofluorescence IP-Immunoprecipitation FC-Flow cytometry ChIP-Chromatin Immunoprecipitation Reactivity: H-Human R-Rat M-Mouse Mk-Monkey Dg-Dog Ch-Chicken Hm-Hamster Rb-Rabbit Sh-Sheep Pg-Pig Z-Zebrafish X-Xenopus C-Cow.