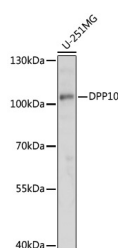


DPP10 Polyclonal Antibody

Catalog No.	E-AB-66855	Reactivity	H
Storage	Store at -20°C. Avoid freeze / thaw cycles.	Host	Rabbit
Applications	WB	Isotype	IgG

Note: Centrifuge before opening to ensure complete recovery of vial contents.

Images



Western blot analysis of extracts of U-251MG cells using DPP10 Polyclonal Antibody at dilution of 1:1000.

Immunogen Information

Immunogen	A synthetic peptide of human DPP10 (NP_001308842.1).
GeneID	57628
Swissprot	Q8N608
Synonyms	DPP10,DPL2,DPPY,DPRP-3,DPRP3

Product Information

Calculated MW	85kDa/90kDa/91kDa
Observed MW	110kDa
Buffer	PBS with 0.02% sodium azide, 50% glycerol, pH7.3.
Purify	Affinity purification
Dilution	WB 1:500-1:2000

Background

This gene encodes a single-pass type II membrane protein that is a member of the S9B family in clan SC of the serine proteases. This protein has no detectable protease activity, most likely due to the absence of the conserved serine residue normally present in the catalytic domain of serine proteases. However, it does bind specific voltage-gated potassium channels and alters their expression and biophysical properties. Mutations in this gene have been associated with asthma. Alternate transcriptional splice variants, encoding different isoforms, have been characterized.

For Research Use Only

Thank you for your recent purchase.
 If you would like to learn more about antibodies, please visit www.elabscience.com.

**Focus on your research
 Service for life science**

Applications:WB-Western Blot IHC-Immunohistochemistry IF-Immunofluorescence IP-Immunoprecipitation FC-Flow cytometry ChIP-Chromatin Immunoprecipitation Reactivity: H-Human R-Rat M-Mouse Mk-Monkey Dg-Dog Ch-Chicken Hm-Hamster Rb-Rabbit Sh-Sheep Pg-Pig Z-Zebrafish X-Xenopus C-Cow.