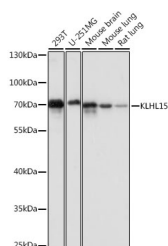


KLHL15 Polyclonal Antibody

Catalog No.	E-AB-66861	Reactivity	H,M,R
Storage	Store at -20°C. Avoid freeze / thaw cycles.	Host	Rabbit
Applications	WB	Isotype	IgG

Note: Centrifuge before opening to ensure complete recovery of vial contents.

Images



Western blot analysis of extracts of various cell lines using KLHL15 Polyclonal Antibody at dilution of 1:1000.

Immunogen Information

Immunogen	Recombinant fusion protein of human KLHL15 (NP_085127.2).
GeneID	80311
Swissprot	Q96M94
Synonyms	KLHL15,HEL-S-305

Product Information

Calculated MW	69kDa
Observed MW	70kDa
Buffer	PBS with 0.02% sodium azide, 50% glycerol, pH7.3.
Purify	Affinity purification
Dilution	WB 1:500-1:2000

Background

This gene encodes a member of the kelch-like family of proteins that share a common domain structure consisting of an N-terminal broad-complex, tramtrack, bric-a-brac/poxvirus and zinc finger domain and C-terminal kelch repeat motifs. The encoded protein may be involved in protein ubiquitination and cytoskeletal organization.

For Research Use Only

Thank you for your recent purchase.
If you would like to learn more about antibodies, please visit www.elabscience.com.

Focus on your research Service for life science

Applications: WB-Western Blot IHC-Immunohistochemistry IF-Immunofluorescence IP-Immunoprecipitation FC-Flow cytometry ChIP-Chromatin Immunoprecipitation Reactivity: H-Human R-Rat M-Mouse Mk-Monkey Dg-Dog Ch-Chicken Hm-Hamster Rb-Rabbit Sh-Sheep Pg-Pig Z-Zebrafish X-Xenopus C-Cow.