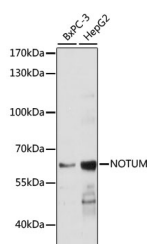


NOTUM Polyclonal Antibody

Catalog No.	E-AB-66869	Reactivity	H
Storage	Store at -20°C. Avoid freeze / thaw cycles.	Host	Rabbit
Applications	WB	Isotype	IgG

Note: Centrifuge before opening to ensure complete recovery of vial contents.

Images



Western blot analysis of extracts of various cell lines using NOTUM Polyclonal Antibody at dilution of 1:1000.

Immunogen Information

Immunogen	Recombinant fusion protein of human NOTUM (NP_848588.3).
GeneID	147111
Swissprot	Q6P988
Synonyms	NOTUM,hNOTUM

Product Information

Calculated MW	55kDa
Observed MW	56kDa
Buffer	PBS with 0.02% sodium azide, 50% glycerol, pH7.3.
Purify	Affinity purification
Dilution	WB 1:500-1:2000

Background

NOTUM (Notum, Palmitoleoyl-Protein Carboxylesterase) is a Protein Coding gene. Diseases associated with NOTUM include Scalp-Ear-Nipple Syndrome and Suppurative Periapical Periodontitis. Among its related pathways are Signaling by GPCR and Regulation of activated PAK-2p34 by proteasome mediated degradation. Gene Ontology (GO) annotations related to this gene include hydrolase activity and palmitoleyl hydrolase activity.

For Research Use Only

Thank you for your recent purchase.
If you would like to learn more about antibodies, please visit www.elabscience.com.

Focus on your research Service for life science

Applications: WB-Western Blot IHC-Immunohistochemistry IF-Immunofluorescence IP-Immunoprecipitation FC-Flow cytometry ChIP-Chromatin Immunoprecipitation Reactivity: H-Human R-Rat M-Mouse Mk-Monkey Dg-Dog Ch-Chicken Hm-Hamster Rb-Rabbit Sh-Sheep Pg-Pig Z-Zebrafish X-Xenopus C-Cow.