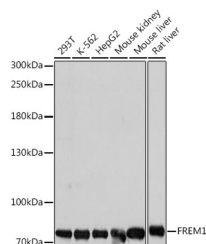


FREM1 Polyclonal Antibody

Catalog No.	E-AB-66871	Reactivity	H,M,R
Storage	Store at -20°C. Avoid freeze / thaw cycles.	Host	Rabbit
Applications	WB	Isotype	IgG

Note: Centrifuge before opening to ensure complete recovery of vial contents.

Images



Western blot analysis of extracts of various cell lines using FREM1 Polyclonal Antibody at dilution of 1:1000.

Immunogen Information

Immunogen	Recombinant fusion protein of human FREM1 (NP_659403.4).
GeneID	158326
Swissprot	Q5H8C1
Synonyms	FREM1, BNAR, C9orf143, C9orf145, C9orf154, MOTA, TILRR, TRIGNO2

Product Information

Calculated MW	25kDa/42kDa/80kDa/244kDa
Observed MW	72kDa
Buffer	PBS with 0.02% sodium azide, 50% glycerol, pH7.3.
Purify	Affinity purification
Dilution	WB 1:500-1:2000

Background

This gene encodes a basement membrane protein that may play a role in craniofacial and renal development. Mutations in this gene have been associated with bifid nose with or without anorectal and renal anomalies. Alternatively spliced transcript variants encoding different isoforms have been described. PubMed ID 19940113 describes one such variant that initiates transcription within a distinct, internal exon; the resulting shorter isoform (named Toll-like/interleukin-1 receptor regulator, TILRR) is suggested to be a co-receptor of the interleukin 1 receptor family and may regulate receptor function and Toll-like receptor/interleukin 1 receptor signal transduction, contributing to the control of inflammatory response activation.

For Research Use Only

Thank you for your recent purchase.
 If you would like to learn more about antibodies, please visit www.elabscience.com.

**Focus on your research
 Service for life science**

Applications: WB-Western Blot IHC-Immunohistochemistry IF-Immunofluorescence IP-Immunoprecipitation FC-Flow cytometry ChIP-Chromatin Immunoprecipitation Reactivity: H-Human R-Rat M-Mouse Mk-Monkey Dg-Dog Ch-Chicken Hm-Hamster Rb-Rabbit Sh-Sheep Pg-Pig Z-Zebrafish X-Xenopus C-Cow.