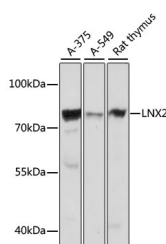


## LNX2 Polyclonal Antibody

<b>Catalog No.</b>	E-AB-66875	<b>Reactivity</b>	H,M,R
<b>Storage</b>	Store at -20°C. Avoid freeze / thaw cycles.	<b>Host</b>	Rabbit
<b>Applications</b>	WB	<b>Isotype</b>	IgG

**Note:** Centrifuge before opening to ensure complete recovery of vial contents.

### Images



Western blot analysis of extracts of various cell lines using LNX2 Polyclonal Antibody at dilution of 1:1000.

### Immunogen Information

<b>Immunogen</b>	Recombinant fusion protein of human LNX2 (NP_699202.1).
<b>GeneID</b>	222484
<b>Swissprot</b>	Q8N448
<b>Synonyms</b>	LNX2,PDZRN1

### Product Information

<b>Calculated MW</b>	76kDa
<b>Observed MW</b>	76kDa
<b>Buffer</b>	PBS with 0.02% sodium azide, 50% glycerol, pH7.3.
<b>Purify</b>	Affinity purification
<b>Dilution</b>	WB 1:500-1:2000

### Background

LNX2 (Ligand Of Numb-Protein X 2) is a Protein Coding gene. Diseases associated with LNX2 include Q Fever. Gene Ontology (GO) annotations related to this gene include PDZ domain binding. An important paralog of this gene is LNX1.

#### For Research Use Only

Thank you for your recent purchase.  
If you would like to learn more about antibodies, please visit [www.elabscience.com](http://www.elabscience.com).

#### Focus on your research Service for life science

Applications: WB-Western Blot IHC-Immunohistochemistry IF-Immunofluorescence IP-Immunoprecipitation FC-Flow cytometry ChIP-Chromatin Immunoprecipitation Reactivity: H-Human R-Rat M-Mouse Mk-Monkey Dg-Dog Ch-Chicken Hm-Hamster Rb-Rabbit Sh-Sheep Pg-Pig Z-Zebrafish X-Xenopus C-Cow.