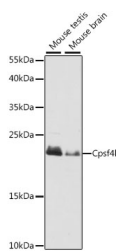


Cpsf4l Polyclonal Antibody

Catalog No.	E-AB-66878	Reactivity	M
Storage	Store at -20°C. Avoid freeze / thaw cycles.	Host	Rabbit
Applications	WB	Isotype	IgG

Note: Centrifuge before opening to ensure complete recovery of vial contents.

Images



Western blot analysis of extracts of various cell lines using Cpsf4l Polyclonal Antibody at dilution of 1:1000.

Immunogen Information

Immunogen	Recombinant fusion protein of mouse Cpsf4l (NP_080958.2).
GeneID	52670
Swissprot	A6NMK7
Synonyms	CPSF4L,0610010C04Rik,1500000C01Rik,D11Ert636e,Cpsf4l

Product Information

Calculated MW	20kDa
Observed MW	22kDa
Buffer	PBS with 0.02% sodium azide, 50% glycerol, pH7.3.
Purify	Affinity purification
Dilution	WB 1:500-1:2000

Background

CPSF4L (Cleavage And Polyadenylation Specific Factor 4 Like) is a Protein Coding gene. Gene Ontology (GO) annotations related to this gene include RNA binding. An important paralog of this gene is CPSF4.

For Research Use Only

Thank you for your recent purchase.
 If you would like to learn more about antibodies, please visit www.elabscience.com.

**Focus on your research
 Service for life science**

Applications:WB-Western Blot IHC-Immunohistochemistry IF-Immunofluorescence IP-Immunoprecipitation FC-Flow cytometry ChIP-Chromatin Immunoprecipitation Reactivity: H-Human R-Rat M-Mouse Mk-Monkey Dg-Dog Ch-Chicken Hm-Hamster Rb-Rabbit Sh-Sheep Pg-Pig Z-Zebrafish X-Xenopus C-Cow.