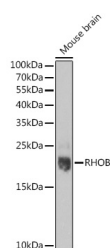


RHOB Polyclonal Antibody

Catalog No.	E-AB-66931	Reactivity	M
Storage	Store at -20°C. Avoid freeze / thaw cycles.	Host	Rabbit
Applications	WB	Isotype	IgG

Note: Centrifuge before opening to ensure complete recovery of vial contents.

Images



Western blot analysis of extracts of Mouse brain using RHOB Polyclonal Antibody at dilution of 1:1000.

Immunogen Information

Immunogen	A synthetic peptide of human RHOB (NP_004031.1).
GeneID	388
Swissprot	P62745
Synonyms	RHOB, ARH6, ARHB, MST081, MSTP081, RHOH6

Product Information

Calculated MW	22kDa
Observed MW	22kDa
Buffer	PBS with 0.02% sodium azide, 50% glycerol, pH7.3.
Purify	Affinity purification
Dilution	WB 1:500-1:2000

Background

Ras homolog gene family, member B, also known as RHOB, is a protein which in humans is encoded by the RHOB gene. RHOB is a member of the Rho GTP-binding protein family. Mediates apoptosis in neoplastically transformed cells after DNA damage. It is not necessary for development but affects cell adhesion and growth factor signaling in transformed cells. It plays a negative role in tumorigenesis as deletion causes tumor formation. It involved in intracellular protein trafficking of a number of proteins, and serves as a microtubule-dependent signal that is required for the myosin contractile ring formation during cell cycle cytokinesis. Required for genotoxic stress-induced cell death in breast cancer cells.

For Research Use Only

Thank you for your recent purchase.
 If you would like to learn more about antibodies, please visit www.elabscience.com.

**Focus on your research
 Service for life science**

Applications: WB-Western Blot IHC-Immunohistochemistry IF-Immunofluorescence IP-Immunoprecipitation FC-Flow cytometry ChIP-Chromatin Immunoprecipitation Reactivity: H-Human R-Rat M-Mouse Mk-Monkey Dg-Dog Ch-Chicken Hm-Hamster Rb-Rabbit Sh-Sheep Pg-Pig Z-Zebrafish X-Xenopus C-Cow.