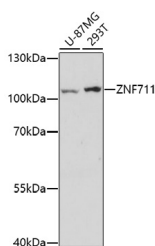


ZNF711 Polyclonal Antibody

Catalog No.	E-AB-67019	Reactivity	H
Storage	Store at -20°C. Avoid freeze / thaw cycles.	Host	Rabbit
Applications	WB	Isotype	IgG

Note: Centrifuge before opening to ensure complete recovery of vial contents.

Images



Western blot analysis of extracts of various cell lines using ZNF711 Polyclonal Antibody at dilution of 1:1000.

Immunogen Information

Immunogen	A synthetic peptide of human ZNF711.
GeneID	7552
Swissprot	Q9Y462
Synonyms	ZNF711,CMPX1,MRX97,ZNF4,ZNF5,ZNF6,Zfp711,dJ75N13.1

Product Information

Calculated MW	86kDa
Observed MW	104kDa
Buffer	PBS with 0.02% sodium azide, 50% glycerol, pH7.3.
Purify	Affinity purification
Dilution	WB 1:500-1:2000

Background

This gene encodes a zinc finger protein of unknown function. It bears similarity to a zinc finger protein which acts as a transcriptional activator. This gene lies in a region of the X chromosome which has been associated with mental retardation.

For Research Use Only

Thank you for your recent purchase.
 If you would like to learn more about antibodies, please visit www.elabscience.com.

**Focus on your research
 Service for life science**

Applications:WB-Western Blot IHC-Immunohistochemistry IF-Immunofluorescence IP-Immunoprecipitation FC-Flow cytometry ChIP-Chromatin Immunoprecipitation Reactivity: H-Human R-Rat M-Mouse Mk-Monkey Dg-Dog Ch-Chicken Hm-Hamster Rb-Rabbit Sh-Sheep Pg-Pig Z-Zebrafish X-Xenopus C-Cow.