

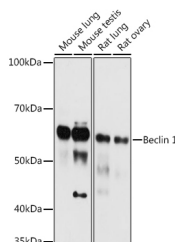
## BECN1 Polyclonal Antibody

**Catalog No.** E-AB-67024  
**Storage** Store at -20°C. Avoid freeze / thaw cycles.  
**Applications** WB

**Reactivity** H,M,R  
**Host** Rabbit  
**Isotype** IgG

**Note:** Centrifuge before opening to ensure complete recovery of vial contents.

### Images



Western blot analysis of extracts of various cell lines using Beclin 1 Polyclonal Antibody at 1:1000 dilution.

### Immunogen Information

**Immunogen** Recombinant fusion protein of human BECN1  
**GeneID** 8678  
**Swissprot** Q14457  
**Synonyms** ATG6,VPS30,beclin1,Beclin 1,BECN1,beclin-1

### Product Information

**Calculated MW** 51kDa  
**Observed MW** 60KDa  
**Buffer** PBS with 0.01% thiomersal,50% glycerol,pH7.3.  
**Purify** Affinity purification  
**Dilution** WB 1:500-1:2000

### Background

This gene encodes a protein that regulates autophagy, a catabolic process of degradation induced by starvation. The encoded protein is a component of the phosphatidylinositol-3-kinase (PI3K) complex which mediates vesicle-trafficking processes. This protein is thought to play a role in multiple cellular processes, including tumorigenesis, neurodegeneration and apoptosis. Alternative splicing results in multiple transcript variants.

### For Research Use Only

Thank you for your recent purchase.  
If you would like to learn more about antibodies, please visit [www.elabscience.com](http://www.elabscience.com).

### Focus on your research Service for life science

Applications:WB-Western Blot IHC-Immunohistochemistry IF-Immunofluorescence IP-Immunoprecipitation FC-Flow cytometry ChIP-Chromatin Immunoprecipitation Reactivity: H-Human R-Rat M-Mouse Mk-Monkey Dg-Dog Ch-Chicken Hm-Hamster Rb-Rabbit Sh-Sheep Pg-Pig Z-Zebrafish X-Xenopus C-Cow.