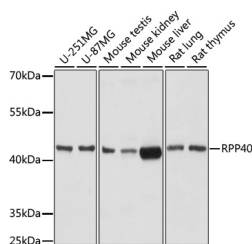


RPP40 Polyclonal Antibody

Catalog No.	E-AB-67048	Reactivity	H,M,R
Storage	Store at -20°C. Avoid freeze / thaw cycles.	Host	Rabbit
Applications	WB	Isotype	IgG

Note: Centrifuge before opening to ensure complete recovery of vial contents.

Images



Western blot analysis of extracts of various cell lines using RPP40 Polyclonal Antibody at dilution of 1:1000.

Immunogen Information

Immunogen	Recombinant fusion protein of human RPP40 (NP_001273061).
GeneID	10799
Swissprot	O75818
Synonyms	RPP40,RNASEP1,bA428J1.3

Product Information

Calculated MW	42kDa
Observed MW	42kDa
Buffer	PBS with 0.02% sodium azide, 50% glycerol, pH7.3.
Purify	Affinity purification
Dilution	WB 1:500-1:2000

Background

RPP40 (Ribonuclease P/MRP Subunit P40) is a Protein Coding gene. Diseases associated with RPP40 include Chromosome 6Pter-P24 Deletion Syndrome. Among its related pathways are rRNA processing in the nucleus and cytosol and tRNA processing. Gene Ontology (GO) annotations related to this gene include ribonuclease P activity.

For Research Use Only

Thank you for your recent purchase.
If you would like to learn more about antibodies, please visit www.elabscience.com.

Focus on your research Service for life science

Applications: WB-Western Blot IHC-Immunohistochemistry IF-Immunofluorescence IP-Immunoprecipitation FC-Flow cytometry ChIP-Chromatin Immunoprecipitation Reactivity: H-Human R-Rat M-Mouse Mk-Monkey Dg-Dog Ch-Chicken Hm-Hamster Rb-Rabbit Sh-Sheep Pg-Pig Z-Zebrafish X-Xenopus C-Cow.