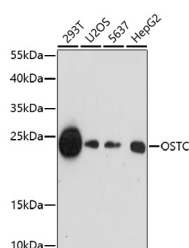


OSTC Polyclonal Antibody

Catalog No.	E-AB-67075	Reactivity	H,M,R
Storage	Store at -20°C. Avoid freeze / thaw cycles.	Host	Rabbit
Applications	WB	Isotype	IgG

Note: Centrifuge before opening to ensure complete recovery of vial contents.

Images



Western blot analysis of extracts of various cell lines using OSTC Polyclonal Antibody at dilution of 1:1000.

Immunogen Information

Immunogen	A synthetic peptide of human OSTC (NP_067050.1).
GeneID	58505
Swissprot	Q9NRP0
Synonyms	OSTC,DC2

Product Information

Calculated MW	17kDa
Observed MW	23kDa
Buffer	PBS with 0.02% sodium azide, 50% glycerol, pH7.3.
Purify	Affinity purification
Dilution	WB 1:500-1:2000

Background

OSTC (Oligosaccharyltransferase Complex Non-Catalytic Subunit) is a Protein Coding gene. Diseases associated with OSTC include Congenital Disorder Of Glycosylation, Type Iin and Bolivian Hemorrhagic Fever. Gene Ontology (GO) annotations related to this gene include dolichyl-diphosphooligosaccharide-protein glycotransferase activity.

For Research Use Only

Thank you for your recent purchase.
If you would like to learn more about antibodies, please visit www.elabscience.com.

Focus on your research Service for life science

Applications: WB-Western Blot IHC-Immunohistochemistry IF-Immunofluorescence IP-Immunoprecipitation FC-Flow cytometry ChIP-Chromatin Immunoprecipitation Reactivity: H-Human R-Rat M-Mouse Mk-Monkey Dg-Dog Ch-Chicken Hm-Hamster Rb-Rabbit Sh-Sheep Pg-Pig Z-Zebrafish X-Xenopus C-Cow.