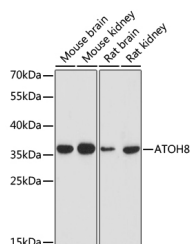


ATOH8 Polyclonal Antibody

Catalog No.	E-AB-67086	Reactivity	M,R
Storage	Store at -20°C. Avoid freeze / thaw cycles.	Host	Rabbit
Applications	WB	Isotype	IgG

Note: Centrifuge before opening to ensure complete recovery of vial contents.

Images



Western blot analysis of extracts of various cell lines using ATOH8 Polyclonal Antibody at dilution of 1:1000.

Immunogen Information

Immunogen	A synthetic peptide of human ATOH8.
GeneID	84913
Swissprot	Q96SQ7
Synonyms	ATOH8,HATH6,bHLHa21

Product Information

Calculated MW	35kDa
Observed MW	35kDa
Buffer	PBS with 0.02% sodium azide, 50% glycerol, pH7.3.
Purify	Affinity purification
Dilution	WB 1:500-1:2000

Background

ATOH8 (Atonal BHLH Transcription Factor 8) is a Protein Coding gene. Diseases associated with ATOH8 include Retinitis Pigmentosa 22. Gene Ontology (GO) annotations related to this gene include protein dimerization activity. An important paralog of this gene is NEUROD4.

For Research Use Only

Thank you for your recent purchase.

If you would like to learn more about antibodies, please visit www.elabscience.com.

**Focus on your research
 Service for life science**

Applications:WB-Western Blot IHC-Immunohistochemistry IF-Immunofluorescence IP-Immunoprecipitation FC-Flow cytometry ChIP-Chromatin Immunoprecipitation Reactivity: H-Human R-Rat M-Mouse Mk-Monkey Dg-Dog Ch-Chicken Hm-Hamster Rb-Rabbit Sh-Sheep Pg-Pig Z-Zebrafish X-Xenopus C-Cow.