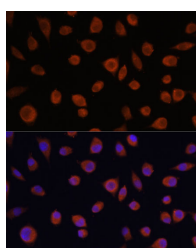


ZCCHC3 Polyclonal Antibody

Catalog No.	E-AB-67087	Reactivity	H,M
Storage	Store at -20°C. Avoid freeze / thaw cycles.	Host	Rabbit
Applications	IF	Isotype	IgG

Note: Centrifuge before opening to ensure complete recovery of vial contents.

Images



Immunofluorescence analysis of L929 cells using ZCCHC3 Polyclonal Antibody at dilution of 1:100. Blue: DAPI for nuclear staining.

Immunogen Information

Immunogen	Recombinant fusion protein of human ZCCHC3 (NP_149080.2).
GeneID	85364
Swissprot	Q9NUD5
Synonyms	ZCCHC3,C20orf99

Product Information

Buffer	PBS with 0.02% sodium azide, 50% glycerol, pH7.3.
Purify	Affinity purification
Dilution	IF 1:50-1:200

Background

Nucleic acid-binding protein involved in innate immune response to DNA and RNA viruses (PubMed:30193849, PubMed:30135424). Binds DNA and RNA in the cytoplasm and acts by promoting recognition of viral nucleic acids by virus sensors, such as DDX58/RIG-I, IFIH1/MDA5 and CGAS (PubMed:30193849, PubMed:30135424). Acts as a co-sensor for recognition of double-stranded DNA (dsDNA) by cGAS in the cytoplasm, thereby playing a role in innate immune response to cytosolic dsDNA and DNA virus (PubMed:30135424). Binds dsDNA and probably acts by promoting sensing of dsDNA by CGAS, leading to enhance CGAS oligomerization and activation (PubMed:30135424). Promotes sensing of viral RNA by RIG-I-like receptors proteins DDX58/RIG-I and IFIH1/MDA5 via two mechanisms: binds double-stranded RNA (dsRNA), enhancing the binding of DDX58/RIG-I and IFIH1/MDA5 to dsRNA and promotes 'Lys-63'-linked ubiquitination and subsequent activation of DDX58/RIG-I and IFIH1/MDA5.

For Research Use Only

Thank you for your recent purchase.
 If you would like to learn more about antibodies, please visit www.elabscience.com.

**Focus on your research
 Service for life science**

Applications:WB-Western Blot IHC-Immunohistochemistry IF-Immunofluorescence IP-Immunoprecipitation FC-Flow cytometry ChIP-Chromatin Immunoprecipitation Reactivity: H-Human R-Rat M-Mouse Mk-Monkey Dg-Dog Ch-Chicken Hm-Hamster Rb-Rabbit Sh-Sheep Pg-Pig Z-Zebrafish X-Xenopus C-Cow.