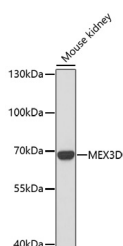


MEX3D Polyclonal Antibody

Catalog No.	E-AB-67094	Reactivity	M
Storage	Store at -20°C. Avoid freeze / thaw cycles.	Host	Rabbit
Applications	WB	Isotype	IgG

Note: Centrifuge before opening to ensure complete recovery of vial contents.

Images



Western blot analysis of extracts of Mouse kidney using MEX3D Polyclonal Antibody at dilution of 1:1000.

Immunogen Information

Immunogen	A synthetic peptide of human MEX3D.
GeneID	399664
Swissprot	Q86XN8
Synonyms	MEX3D,MEX-3D,MEX3,OK/SW-cl.4,RKHD1,RNF193,TINO

Product Information

Calculated MW	65kDa
Observed MW	65kDa
Buffer	PBS with 0.02% sodium azide, 50% glycerol, pH7.3.
Purify	Affinity purification
Dilution	WB 1:500-1:2000

Background

MEX3D (Mex-3 RNA Binding Family Member D) is a Protein Coding gene. Diseases associated with MEX3D include Hemophagocytic Lymphohistiocytosis, Familial, 1 and Hemophagocytic Lymphohistiocytosis, Familial, 2. Gene Ontology (GO) annotations related to this gene include nucleic acid binding and RNA binding. An important paralog of this gene is MEX3B.

For Research Use Only

Thank you for your recent purchase.
If you would like to learn more about antibodies, please visit www.elabscience.com.

Focus on your research Service for life science

Applications: WB-Western Blot IHC-Immunohistochemistry IF-Immunofluorescence IP-Immunoprecipitation FC-Flow cytometry ChIP-Chromatin Immunoprecipitation Reactivity: H-Human R-Rat M-Mouse Mk-Monkey Dg-Dog Ch-Chicken Hm-Hamster Rb-Rabbit Sh-Sheep Pg-Pig Z-Zebrafish X-Xenopus C-Cow.