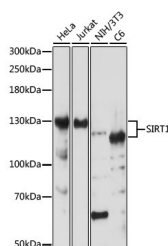


SIRT1 Polyclonal Antibody

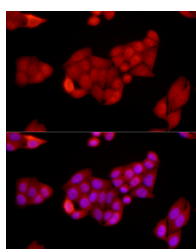
Catalog No.	E-AB-67101	Reactivity	H,M
Storage	Store at -20°C. Avoid freeze / thaw cycles.	Host	Rabbit
Applications	WB,IF	Isotype	IgG

Note: Centrifuge before opening to ensure complete recovery of vial contents.

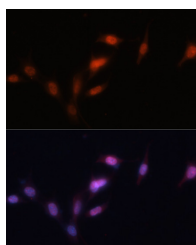
Images



Western blot analysis of extracts of various cell lines using SIRT1 Polyclonal Antibody at 1:1000 dilution.



Immunofluorescence analysis of HeLa cells using [KO Validated] SIRT1 Polyclonal Antibody at dilution of 1:250 (40x lens). Blue: DAPI for nuclear staining.



Immunofluorescence analysis of NIH/3T3 cells using [KO Validated] SIRT1 Polyclonal antibody at dilution of 1:250 (40x lens). Blue: DAPI for nuclear staining.

Immunogen Information

Immunogen	A synthetic peptide of human SIRT1
GeneID	23411
Swissprot	Q96EB6
Synonyms	SIR2,SIR2L1,SIR2alpha,SIRT1,sirtuin 1

Product Information

Calculated MW	61kDa/81kDa
Observed MW	120kDa
Buffer	PBS with 0.01% thiomersal,50% glycerol,pH7.3.
Purify	Affinity purification
Dilution	WB 1:500-1:2000,IF 1:50-1:200

Background

This gene encodes a member of the sirtuin family of proteins, homologs to the yeast Sir2 protein. Members of the sirtuin family are characterized by a sirtuin core domain and grouped into four classes. The functions of human sirtuins have not yet been determined; however, yeast sirtuin proteins are known to regulate epigenetic gene silencing and suppress recombination of rDNA. Studies suggest that the human sirtuins may function as intracellular regulatory proteins with mono-ADP-ribosyltransferase activity. The protein encoded by this gene is included in class I of the sirtuin family. Alternative splicing results in multiple transcript variants.

For Research Use Only

Thank you for your recent purchase.
 If you would like to learn more about antibodies, please visit www.elabscience.com.

**Focus on your research
 Service for life science**

Applications:WB-Western Blot IHC-Immunohistochemistry IF-Immunofluorescence IP-Immunoprecipitation FC-Flow cytometry ChIP-Chromatin Immunoprecipitation Reactivity: H-Human R-Rat M-Mouse Mk-Monkey Dg-Dog Ch-Chicken Hm-Hamster Rb-Rabbit Sh-Sheep Pg-Pig Z-Zebrafish X-Xenopus C-Cow.